

SOUTH GAULISH *SIGILLATA* IN SOUTHWEST *HISPANIA* CIRCULATION AND CONSUMPTION

CATARINA VIEGAS
MACARENA BUSTAMANTE-ÁLVAREZ
(eds.)



SOUTH GAULISH *SIGILLATA* IN SOUTHWEST *HISPANIA*

CIRCULATION AND CONSUMPTION

CATARINA VIEGAS
MACARENA BUSTAMANTE-ÁLVAREZ
(eds.)





LISBOA
UNIVERSIDADE
DE LISBOA



LETRAS
LISBOA



CENTRO DE ARQUEOLOGIA
DA UNIVERSIDADE
DE LISBOA

uniarq

FCT

Fundação
para a Ciência
e a Tecnologia



UNIVERSIDAD
DE GRANADA



Unión Europea
Fondo Europeo
de Desarrollo Regional
"Una manera de hacer Europa"

Fundación
BBVA

Estudos & Memórias

UNIARQ series

(Centre for Archaeology, University of Lisbon)

Series coordination: Ana Catarina Sousa
Founded by Victor S. Gonçalves

18.

VIEGAS, C.; BUSTAMANTE-ÁLVAREZ, M. (eds.) (2021) –
South Gaulish sigillata in Southwest Hispania: circulation and consumption.
Estudos & Memórias 18. Lisboa: UNIARQ/FL-UL. 244 pp.

Cover: Catarina Viegas and Rui Roberto de Almeida.

Photograph of the cover: South Gaulish *sigillata* from the Guadiaro's wreck,
by Macarena Bustamante-Álvarez.

Typesetting and layout: Rui Roberto de Almeida

Printed and bound by Sersilito – empresa gráfica, Lda.
300 copies

ISBN: 978-989-53453-4-2 / Depósito legal: 000000000000
DOI: <https://doi.org/10.51427/10451/50262>

Copyright © 2021 the authors.
Any reproduction of text and images is prohibited, without the express
authorization of the author, under the terms of the current law,
namely DL 63/85, of March 14, with subsequent amendments.

Lisboa, 2021

This work was financed by Portuguese funds through FCT - Fundação para a Ciência e a Tecnologia in the framework of the projects UIDB/00698/2020 and UIDP/00698/2020.

This book was also financed by the following projects:
'Corpus Vasorum Hispanorum. Análisis tipológico, cronológico y prosopográfico de los sigilla en terra sigillata hispánica a partir de los centros consumidores. Parte I: Lusitania' (PGC2018-093478-A-I00) financed by Convocatoria Proyectos de Excelencia – Plan Estatal de Generación de Conocimiento – Ministerio de Ciencia, Innovación y Universidades – España. And by the Project 'Aplicación de nuevas tecnologías para el desarrollo del Corpus Vasorum Hispanorum. Una herramienta para análisis tipológico, cronológico y prosopográfico de los sigilla en Terra Sigillata Hispánica' financed by Fundación BBVA in the context of the Program Logos Ayuda a la Investigación en Estudios Clásicos 2019.

CONTENTS

<i>Prologue. Overview on the study of terra sigillata in Portugal</i> CARLOS FABIÃO	5
<i>Foreword OF THE EDITORS</i> CATARINA VIEGAS, MACARENA BUSTAMANTE-ÁLVAREZ	13
<i>The Mainz internet database of Names on Terra Sigillata (samian ware), Portugal and Spain and the collaborative samian research network</i> GEOFFREY B. DANNELL, ALLARD W. MEES	17
<i>South gaulish terra sigillata found in Bracara Augusta (North Portugal)</i> RUI MORAIS	27
<i>South Gaulish terra sigillata in the forum of Aeminium (Coimbra, Portugal): a decisive component of the dating process</i> PEDRO C. CARVALHO, RICARDO COSTEIRA DA SILVA	47
<i>South Gaulish terra sigillata in Ammaia (São Salvador de Aramenha, Marvão): typological and stratigraphical analysis</i> JOSÉ CARLOS QUARESMA	57
<i>Potters and vessels: consumers, markets and dynamics at play in the circulation of Gaulish terra sigillata: the evidence for the region under the influence of Olisipo (Lisbon)</i> RODRIGO BANHA DA SILVA	75
<i>Gaulish terra sigillata trade in Augusta Emerita (Mérida). Data from the sigilla in the Museo Nacional de Arte Romano (MNAR)</i> MACARENA BUSTAMANTE-ÁLVAREZ, JOSÉ M. JEREZ LINDE	93
<i>Preliminary results on the Gaulish terra sigillata from the fish-salting production centre at Tróia</i> ANA PATRÍCIA MAGALHÃES, INÊS VAZ PINTO, PATRÍCIA BRUM	117
<i>The circulation of South Gaulish sigillata in southern Lusitania: Alentejo region and the Algarve (Portugal)</i> CATARINA VIEGAS, CAROLINA GRILO, CATARINA ALVES	131
<i>The Gaulish terra sigillata in Baelo Claudia. Analysis of the contexts from the 'Puerta de Carteia'</i> MACARENA BUSTAMANTE-ÁLVAREZ, DARIO BERNAL-CASASOLA, ALICIA ARÉVALO GONZÁLEZ	151
<i>Gaulish terra sigillata in Seville. New data, new perspectives</i> ELISE ARNOLD, ENRIQUE GARCÍA VARGAS	177
<i>First approach on the distribution of amphorae from Gaul in Lusitania</i> RUI ROBERTO DE ALMEIDA, VITOR FILIPE	211

SOUTH GAULISH TERRA SIGILLATA IN AMMAIA (SÃO SALVADOR DE ARAMENHA, MARVÃO): TYPOLOGICAL AND STRATIGRAPHICAL ANALYSIS

José Carlos Quaresma

josecarlosquaresma@gmail.com

FCSH - Nova University Lisbon, CHAM - Centre for the Humanities

Abstract

This article summarizes our work on the imports of South Gaulish *terra sigillata* from the town of *Ammaia*, in the southern part of the province of *Lusitania* and within the geo-sphere of the provincial capital, *Augusta Emerita*. The assemblage available was fully studied: it includes the assemblages from the excavations of the early 20th century, the excavations of the years 1990 and 2000, as well as the sets of excavations of the RadioPast Project (2008-2011). The subject is analysed with regard to its typological concerns, but mainly with respect to its stratigraphical evolution: *Ammaia* presents excellent levels from Claudian-Neronian, Flavian, Flavian-Antonine eras and finally between AD 125-150. The empirical data from the first and last stages are particularly important, given the scarcity of stratigraphical information across the Iberian Peninsula, especially concerning the Julian-Claudian period.

Resumo

Este artigo resume o nosso trabalho sobre as importações de *terra sigillata* sudgálica na cidade de *Ammaia*, na metade meridional da província da *Lusitania* e na esfera geo-económica da capital provincial, *Augusta Emerita*. O conjunto, estudado na sua totalidade, engloba as coleccções das escavações de início do século XX, os conjuntos das escavações dos anos 1990 e 2000, bem como os conjuntos das escavações do Projecto RadioPast (2008-2011). O problema é analisado na sua totalidade, mas sobretudo na sua evolução estratigráfica, com fases de excelente qualidade para as épocas cláudio-neroniana, flávia, flávia-antonina e 125-150 d.C.. Os dados da primeira e última fases são particularmente importantes, em face da escassez de informação estratigráfica na Península Ibérica, sobretudo em relação aos momentos júlio-cláudios.

Keywords

South Gaulish *terra sigillata*; *Ammaia*; *Lusitania*; stratigraphical evolution; statistics.

Palavras-chave

Terra sigillata sudgálica; *Ammaia*; *Lusitania*; evolução estratigráfica; estatística.

1. Introduction

Ammaia is located in the southwest of the Iberian Peninsula, 10 km away from the border between Portugal and Spain, on the northwest part of the São Mamede mountain: a region known as the High Alentejo, ranging between 400 and 700m asl. It is situated on the left bank, midway up the Tagus valley, and is some 200 km distant from the sea and another 100 km from the capital of *Lusitania*, *Augusta Emerita* (Fig. 1 and 2). The city of *Ammaia* falls within the southern half of the Roman province of *Lusitania*, in its hinterland, at the start of the Central Meseta (Ribeiro, 1991: maps 1 and 4).

Here, some kilometres away from *Ammaia*, the river Sever begins its journey to its confluence at the left bank of the Tagus river, which last is the longest in the Iberian Peninsula. Being a region rich in its geology and mining, notably concerning lead, silver and rock crystal, it was described by Pliny in the 70s of the 1st century AD, in his account on the extraction of rock crystal in the *iugis ammaiensibus* (Guerra, 1995: PLIN. 37,24).

An Augustan origin for the city has been proposed by several authors, such as S. Pereira (2005: 45; 2009: 61, 131), from an archaeological perspective. He argues from the presence of Italian *terra sigillata* and 14 *denarii* (from a funerary context) collected at the construction of the road to Spain. These, according to the author, can have a Late Augustan date.

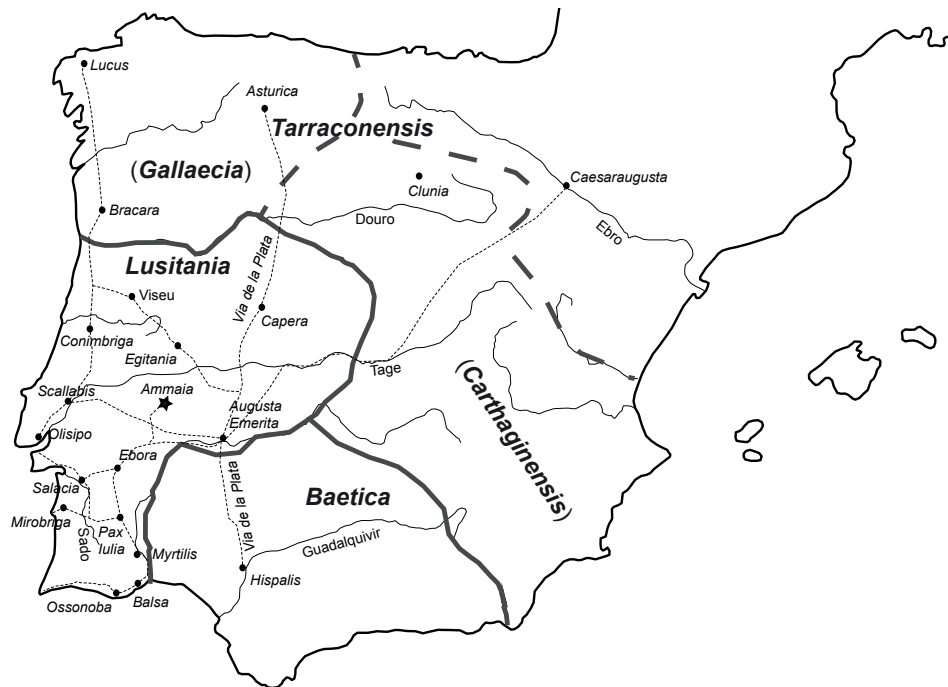


Fig. 1 – Geographical location of Ammaia in the Iberian Peninsula.



Fig. 2 – Plan of Ammaia, according to the surveys of the RadioPast Project. © RadioPast, elaboration Eleftheria Paliou.

V. Mantas has analyzed the problem from an epigraphic, literary and architectural point of view. The similarities at *Ammaia* to the fora of Clunia and Eborac, created as city-blocks in the second half of the 1st century AD, assist in dating this sector of the city (Mantas, 2010: 177, 178). Even so, the author accepts the hypothesis of an Augustan promotion for the *civitas*, a proposal which finds no epigraphic evidence (Mantas, 2000: 409).

For this Augustan chronology, the safest indicative data are the architectural pieces, as well as some construction details, such as some V-shaped cuts where certain blocks join. To which we can add the resemblance between the vaulted arch from 'Porta Sul' (South Gate) with that of *Augusta Emerita*, known through the numismatic record (Fernandes, 2001). Mantas (2000: 317) admits that a Claudian promotion for the *civitas* is more plausible, given both that Pliny does not mention this city in his list of *oppida* (Guerra, 1995) and that the oldest epigraphical evidence mentioning the *civitas* is dated to AD 44-45 (IRCP 615), in which the city does homage to the Emperor Claudius.

An Augustan-Tiberian inception seems less likely: *Aritium Vetus* (Casal da Várzea, Alvega), on the Tagus, is still mentioned as *oppidum* in AD 37 (IRCP 647). The situation seems to suggest that the legal progress was later conducted throughout the region, in which the citizens of *Ammaia* were enrolled in the *Quirina* tribe (Guerra, 1995: 139).

Guerra (1995: 139; 1996) proposes that the municipal promotion occurring during the principates of Claudius or Nero, since during this last emperor's reign one *Cornelius Macro*, who has received the status of citizenship from *divinus Claudius*, is honoured (IRCP 618).

Mantas has also put forward another hypothesis: the municipal promotion happened in the principate of Galba, an emperor with strong Hispanic support, in AD 68, during the provincial governorship of Otho in *Lusitania*. This suggestion takes into account the fact that Clunia obtained its degree of *colonia* at that time and that both cities experienced strong demographic movements: there are four Clunienses at *Ammaia*, which could reflect a combined municipal elevation (Mantas, 2000: 412).

As the importation of *terra sigillata*, thin-walled wares and lamps all seem to reflect, the boom period for the first class clearly dates to the Claudian-Neronian times, with trade in the two other ceramic classes also beginning now. Apparently, before the middle/third quarter of the 1st century AD, *Ammaia* is not really a town yet. There exists a market in the time of the Augustan-Tiberian principates, but it is a sluggish one, as is witnessed in other slow-developing cities of the first half of the 1st century AD, such as Chãos Salgados (Mirobriga), where the level of Italian imports is similarly poor (Quaresma, 2012: 223; Quaresma, 2018b).

This flow of fine wares, the architectural chronology suggested by the forum, the statistics of the Italian *terra sigillata* from baths and forum, and the stratigraphy itself in the baths and 'Porta Sul' sectors all argue that is in the second half of the 1st century AD that the settlement begins to emerge as a truly urban space. The forum and baths (albeit probably with another function in this phase) date to the Claudian-Neronian era, with important changes occurring under the Flavians. In this last period too Porta Sul is built, although there are previous structures known – just some simple walls whose orientation is clearly different from that of the later urban development. However, we cannot rule out the possibility that the rare pre-Claudian objects are residual. There does exist also a previous building under the baths, but in this sector the RadioPast project has also detected Claudian-Neronian levels (Quaresma, 2018a).

This article is drawn from the conclusions of the research lead by the author as a post-doctoral fellow of FCT (2010-2015). This work had the supervision of Frank Vermeulen, who, between 2010 and 2011, conducted (with Cristina Corsi) an extensive research project into the Roman city, employing non-intrusive methods of prospection, as well as fieldwalk survey and excavation.

The RadioPast project ran in parallel with the pursuit of our individual fellowship: a series of publications has resulted, of which we can highlight: Vermeulen, Corsi and de Dapper (2012); Vermeulen, *et al.* (2005); Vermeulen and Taelman (2010); Corsi and Vermeulen (2013); Corsi (2014); Quaresma (2014a, b, c, d).

2. Stratigraphical contexts

2.1. Claudian-Neronian phase

The Claudian-Neronian SU (Stratigraphic Units) of the baths of *Ammaia* presents a rich assemblage (**Fig. 3**). *Terra sigillata* is the most important ceramic class, largely dominated by South Gaulish production, from La Graufesenque, with 59,6% of the total fine wares of the phase and displaying a relatively broad typological repertoire. Italian production is already quite small in quantity (5,2%). The very low presence of Peñaflor type sigillata (0,8%) is quite an important feature, but the presence, even if also low, of the Hispanic production from La Rioja (5,2%) is even more relevant.

The large assemblage of South Gaulish *terra sigillata*, normally with a bright slip (a less common aspect within the later contexts), confirms the evolution of this attribute during the 1st century AD (Farine, 1996; Quaresma, 2012; Quaresma, 2018a). The assemblage consists of a first set already at the end of its commercial life: Drag. 19, from the first half of the 1st century AD, and Ritt. 1, produced between AD 20 and 60; Ritt. 9b, produced between AD 15 and 70, and Ritt. 5c, produced between AD 30 and 50 (Passelac and Vernhet, 1993).

Drag. 15/17 is an intermediate case, since this type may start its production in the beginning of the 1st century AD (Polak, 2000: 86). At La Graufesenque (in a 1st century AD street-context: Farine, 1996), in the SU of AD 20/40, excavations have yielded 58 vessels of this type, which is present in good quantities until AD 60-90.

A second set begins during the principate of Claudius. From this comes the only decorated vessel, Drag. 30, with a plain rim, that Passelac and Vernhet (1993) relate to its variant b, produced from 40 AD onwards. This second chronological group includes three main types: Drag. 18, 24/25 and 27. Drag. 18 occurs with two profiles: one with a more curved wall and well-moulded rim, having a diameter of 140 mm (**Fig. 3, 6**); and another with more everted walls and a thinner rim, at 170 mm diameter (**Fig. 3, 13**). The thickening of the wall and lip was dated by Oswald and Pryce (1920: 181) to Domitian-Trajanic times, although known potters using this form may start to operate during the Flavian times, when the Drag. 18/31 form emerges. Passelac and Vernhet (1993) call this type Drag. 18b, but date the beginning of this morphological change to Nero.

Two vessels of *Ammaia* still belong to Drag. 18a, albeit **no. 13 (Fig. 3)** shows transitional traits, consistent with the Claudian-Neronian chronology of this stratigraphical phase. Concerning the diagnosed diameters (at 140 and 170 mm), one must comment that they do not coincide with either the Neronian values from Usk, ranging between 160 and 190 mm (Tyers, 1993: 133), or with those from Emporion, at between 150 and 180 mm (Aquilué Abadías *et al.*, 2005: 207).

At Vechten, Polak (2000: 76) proposes that the 175 mm diameters are pre-Flavian and values under 160 mm are Flavian. In the AD 78/82 shipwreck of Cala Culip IV, there are two groups, at 140 and 160 mm, but the biggest diameters occur on more everted walls (Nieto Prieto *et al.*, 1989: 145-146). The Vespasian range of 20 mm (140-160 mm) at Cala Culip as opposed to the Neronian one of the 30 mm at Usk (160-190 mm) and Emporion (150-180 mm) highlights not only the trend in reducing diameters, but also the contemporary production of different diameters.

At La Graufesenque, the situation becomes even complex. In the discharge pit of Cirratus (AD 30-40), the values are measured at between 230 and 280 mm; in the Gallicanus' discharge pit (AD 55-60), they occur between 120 and 199 mm, with 160-179 mm representing 79,2% of the total and values of 140-159 mm 16,2%, making this one the closest context to *Ammaia*. In the discharge pit of Cluzel 15 (AD 60-65), values vary between 120 and 199 mm, with 120-139 mm representing 46,7% and 160-179 mm 43,3%; finally in the discharge pit 79 (AD 80-120 or 150), values vary between 160 and 180 mm, of which a small part measures between 210 and 245 mm (Genin, 2007: 102, 111, 134).

Drag. 24/25 is the second most important type. Two vessels are plain (**Fig. 3, 22**: 80 mm). A fine-rouletted rim occurs on eight vessels, of which two vessels have diameters of 90 and 130 mm (**Fig. 3, 21**). A coarser *guilloché* occurs with nine vessels whose diameters seem to have a somewhat greater variability: they may be reduced to 70 mm (**Fig. 3, 3**, and **4**), but the greater part measures 80 mm (**Fig. 3, 4**), 90 mm (**Fig. 3, 7**), 120 mm (**Fig. 3, 1**) and 130 mm (**Fig. 3, 9** and **12**). All of these profiles are relatable to variant Drag. 24/25b, with its vertical wall, dated to AD 40-70 (Passelac and Vernhet, 1993). Drag. 24/25 is the main type in the Claudian-Neronian levels from Vienne (Isère) and in the discharge pit 9003 at Soumaltre. In Narbonne, Drag. 24/15 and 27 have much the same prominence, but on this site Drag. 15/17 is the main type, unlike at *Ammaia* (Godard, 1992; Genin and Rascalou, 2004; Sanchez and Silvéreano, 2005).

The main form of this phase though is Drag. 27 (many have carinated walls). Subtype Drag. 27c is a probable intrusion (only one sherd) from higher levels. The main variant is Drag. 27b, which has a flat-topped rim, yet it is close to the morphology of Drag 27c (**Fig. 3, 18**, with 80 mm). This subtype b displays diameters between 70 mm (**Fig. 3, 17**) and 90 mm (**Fig. 3, 10**).

Passelac and Vernhet (1993) date Drag. 27a to AD 10-40, Drag. 27b to AD 40-80 and Drag. 27c to AD 80-120. The first type (with only one sherd) is already residual in this phase and the last one, whose classification is not safe because of the smallness of the sherd, would be an intrusion. In the Gallicanus' discharge pit (AD 55-60), at La Graufesenque, rims are already rounded, which feature forces back the beginning of Drag. 27c to Nero, or at least the rounded rim of what we may still call Drag. 27b, since it contains an outer groove on the ring-foot (Genin, 2007: 416, pl. 50, no. 9-11). This last proves that a rounded rim does not of necessity always point to variant c!

There are two South Gaulish potter stamps in this phase:] MV (?) and a possible] MRI (**Fig. 3, 11**). Both cases can be read as *Murrus* or *Mur-*, although we do not have any similar data in the literature. *Murrus* worked at La Graufesenque, between Claudius and Vespasian (Oswald, 1931: 241; Bémont, 1976: 283). Mees (1995: 88-89) does not accept this solution and therefore proposed the provisional name of *Mur-* and a datation to AD 70-90, though the stratigraphy of *Ammaia* seems to refute this.

Type	Frag.	MNI	MNI Prod.	% MNI Prod.	Fig. 3
Drag. 19	1	1	69	59,6	2
Ritt. 1	2	2			5, 19
Drag. 15/17	1	1			
Drag. 18	7	7			6, 13
Plate	5	5			
Ritt.5c	2	1			14
Ritt.9b	2	2			15, 20
Drag. 24/25	19	17			1, 3, 4, 7, 8, 9, 12, 21, 22
Drag. 27	17	17			
Drag. 27a	1	1			
Drag. 27b	8	8			10, 19, 18
Drag. 27c	1	1			
Cup	3	3			11
Drag. 30	1	1			
Unc.	24	2			
Total residuality of the context: 3,5%					

Table 1 – Quantification of the Claudian-Neronian SU. MNI (=Minimum Number of Individuals).

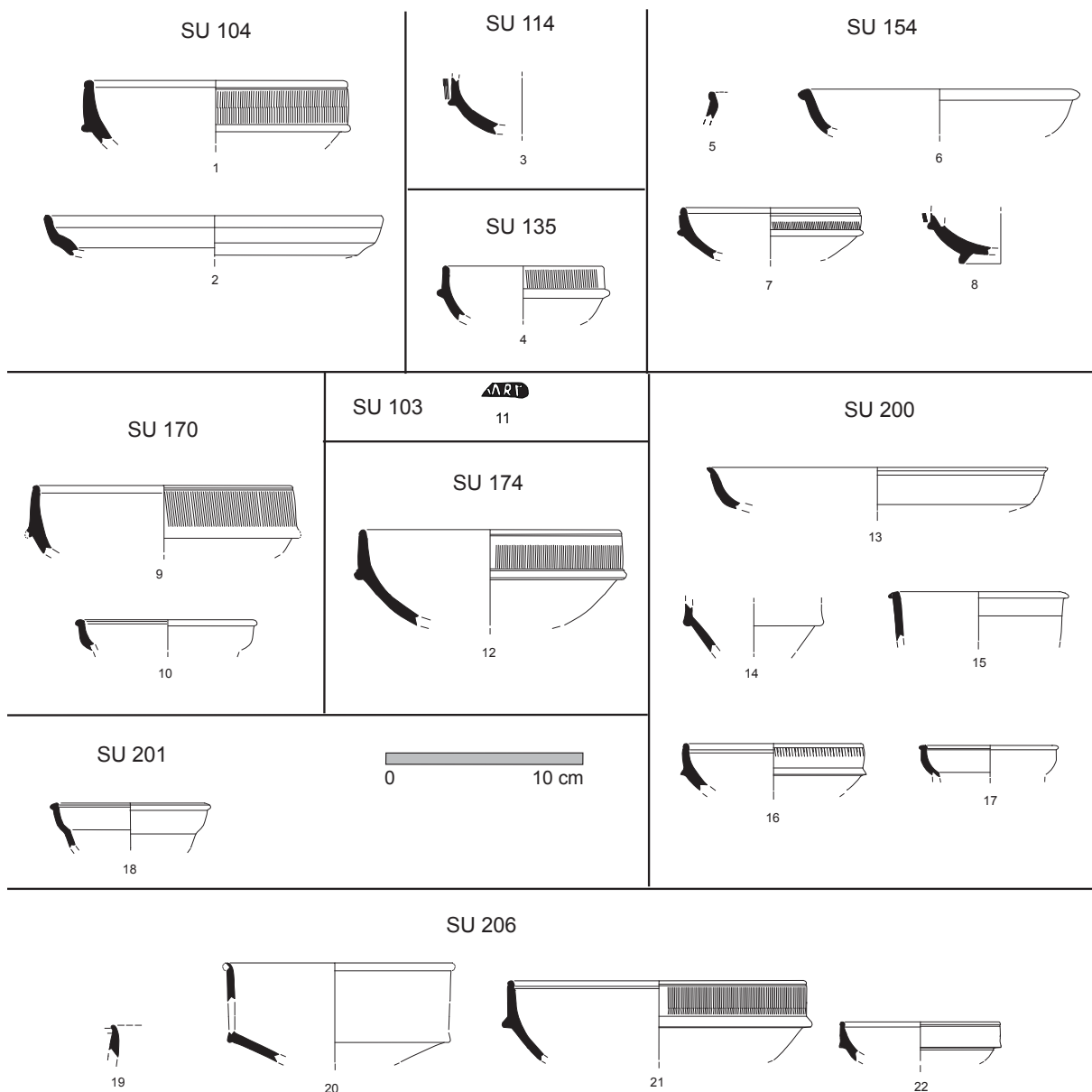


Fig. 3 – South Gaulish terra sigillata from the Claudian-Neronian SU.

2.2. Flavian phase

In the Flavian contexts, the observed assemblage doubles its amount (251 MNI). There is a growth of imports of Italian terra sigillata (9,2% of the total fine ware assemblage), both in quantity and typological variety. The South Gaulish production maintains its domination (38,8%) and its typological variety, despite a certain residuality and the loss of some vitality in comparison with the Claudian-Neronian products. Hispanic terra sigillata from La Rioja is now the second most important production (21,2%), but still far from that of Southern Gallia. It is followed by the Hispanic terra sigillata from Andújar, which was absent in the previous phase. Andújar though only provides a small amount of vessels (2,4%), as does the Peñaflores type sigillata, which remains, as in the previous phase, represented by but a single individual (0,4%).

At Ammaia, 9,2%, within the wide assemblage of South Gaulish terra sigillata present, is residual: Drag. 16 (Fig. 4, 35), Ritt. 5a and 5c (Fig. 4, 26 and 50) and Ritt. 8 (Passelac and Vernhet, 1993). Drag. 29

(always with high quality slip) (Farine, 1996; Quaresma, 2018a), typical of the Claudian-Neronian period, belongs to this phase, according to its decorative attributes: the peak period is dated by Passelac and Vernhet (1993) to 40-60 AD, within which we may include the gadroon motif (Tilhard 2004: fig. 142, no. 197-205) of **Fig. 4, 34**.

No. 31 and 44 (Fig. 4) resemble no. 561 of Tilhard (2004: fig. 180), also dated to the Claudian-Neronian period, but the vessel published by this author presents a simple corole flowers, while the vessels of *Ammaia* have triple coroles. Taking into account the evolution of this motif separating the ovolos, we may propose a Flavian chronology for these vessels, since Dannell, Dickinson and Vernhet (1998), with regard to the ovolos of Drag. 30, refer that trident tips succeed rosettes, around 70 AD.

No. 32 (Fig. 4), that shows a rabbit between *flabella*, may belong to the transition from the floruit to the transitional period, around AD 60 (Passelac and Vernhet, 1993). Tilhard (2004: fig. 152, no. 279) dates similar vessels to the Neronian-Vespasian period. However, another common attribute (beaded line) on the three vessels from *Ammaia* inclines us to a Claudian dating. According to Hermet (1934), Sanchez and Silvéreano (2005: 175) and Genin and Rascalou (2004: 141), at least with regard to type Drag. 30, beaded line must be dated before 50 AD and wavy lines from then onwards. In the case of **no. 31 and 32 (Fig. 4)** of *Ammaia*, are we faced with a transitional phase with changing attributes, so explaining the presence of Claudian-Neronian motifs alongside Vespasian ones?

Drag. 27b (Passelac and Vernhet, 1993, dated to AD 40-80) is still well represented, with a dozen individuals, and ranks yet above Drag. 27c (Passelac and Vernhet, 1993, dated to AD 80-120), with its seven pieces. The first subtype has diameters between 80 and 100 mm, while the second one has a wider range (between 70 and 130 mm). There are several cases of transition in the stratigraphy: in SU 90, three Drag. 27b (**Fig. 4, 28-30**) show a profile in transition to Drag. 27c and diameters of 80 and 90 mm; in SU 130, one vessel of Drag. 27c (**Fig. 4, 33**) has a more closed profile than Drag. 27b and wide diameter of 130 mm. **No. 24** is a weird case, with a 108 mm diameter and *guilloché* on the extended lip, forming a proto-flange.

Drag. 24/25, a major type among South-Gaulish *terra sigillata*, gives an idea of residuality influencing part of this Flavian assemblage, given that at this period Drag. 27 should be the major type. Other contexts also reflect the importance of Drag. 24/25, but never enough to challenge Drag. 27. In the street-context of the 1st century AD at La Graufesenque, Drag. 24/25 slightly declines numerically in the middle of the century, but then reinforces its presence between AD 60 and 90 (Farine, 1996), achieving in the shipwreck of Cala Culip IV (AD 78-82) 11,4% (Nieto and Puig, 2001); in the Domitian levels of Emporion it still has a high frequency, with 18 vessels of Drag. 24/25 and a further 28 vessels of Drag. 27 (Aquilué Abadias *et al.*, 2005).

According to Farine (1996: 219), at La Graufesenque, until the middle of the 1st century AD, *guilloché* may take an oblique position and sometimes has double lines, while during the second half of the century it occurs often in a vertical position. At *Ammaia*, various modalities are present: one case of fine *guilloché* (diameter of 70 mm), 18 with a *guilloché* of normal thickness (70-80 mm) and three plain rims (100 mm). Fragments **23 and 38 (Fig. 4)** have a double-line *guilloché*, **39 (Fig. 4)** a simple *guilloché* and **41 (Fig. 4)** an oblique one. Among Drag. 15/17, we can observe the presence of a triangular-shaped ring-foot. Drag. 18 comes in two diameter sizes – at 170 mm (37) and 150 mm (**Fig. 4, 47**), the larger going with the more classic form, and the smaller with the most advanced profile. In face of the lack of Drag. 37, the only certain Flavian imports are Drag. 35 and 36 (**Fig. 4, 48**) and service D1 (**Fig. 4, 51**) (Vernhet, 1976).

With regard to potter stamps, two cases are unreadable. Another one preserved only the text [I] and another one preserved ...SM. It is possible that this last stamp belongs to *Passenus* 5A, who sometimes signed with the text *Passeni manu*. Oswald (1931: 228), Bémont (1976: 57) and Hofmann (1971-1972) date *Passienus* or *Passenus* to the Neronian-Vespasian period. Polak (2000: 282) extends his activity into the 80s AD, while Mees (2005: 315) proposes AD 55-90 and Genin *et al.* (2007: 262-269) places him between AD 50/60 and 100/110, despite his absence in the Domitian-Trajanic discharge pit 79 (Vernhet, 1981).

No. 45 (Fig. 4), on a rouletted Drag. 24/25, has the text OF. IVNII, from the potter *Iunius*, similar to no. 137 of Polak (2000: 247), who dates him between AD 50 and 80. **No. 46 (Fig. 4)** has the text]ICANI and belongs to the potter *Gallicanus ii*. Hoffman (1971-1972: 16) dates this stamp between AD 40 and 70. Polak (2000: 233) describes a [G] ALLICANI. MA, on Drag. 29, between AD 50 and 70, but in this case the dyes are never similar, despite the nexus of the A and the N. In the work of Genin *et al.* (2007: 206), the intense activity of *Gallicanus ii* is revealed, with 1673 stamps, showing the gemination of the letters A and N, but the letter A always has a branch, which does not occur at Ammaia. The chronology proposed in this study of La Graufesenque points to AD 40-70/80.

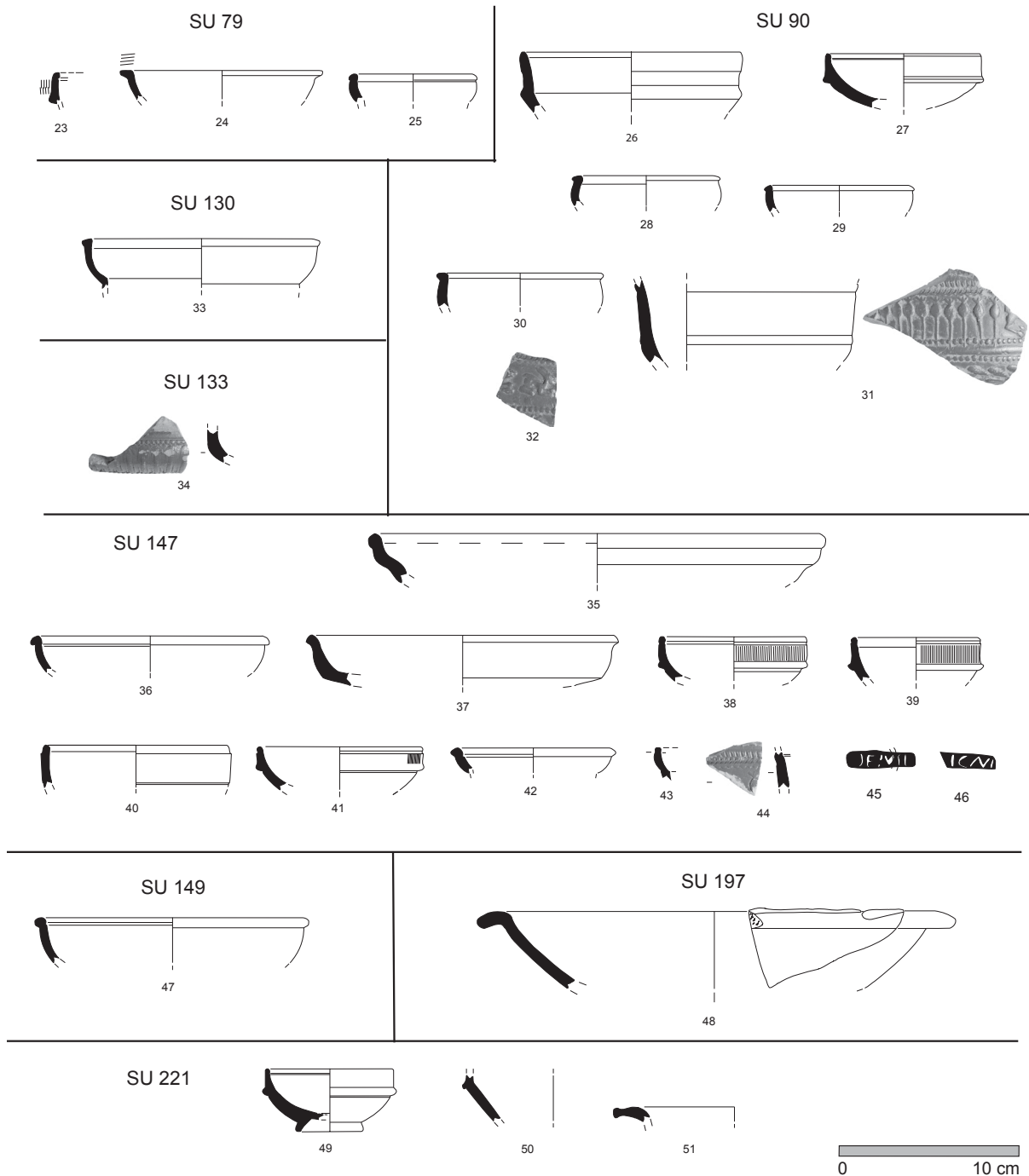


Fig. 4 – South Gaulish terra sigillata from the Flavian SU of the baths (*thermae*).

Type	Frag.	MNI	MNI Prod.	% MNI Prod.	Fig. 4		
Drag. 16	1	1	97	38,8	35		
Drag. 15/17	3	3					
Drag. 18	4	4			37, 47		
Drag. 36	2	2			48		
Service D1	1	1			51		
Plate	8	8					
Ritt.5a	1	1			26		
Ritt.5c	3	3			50		
Ritt.8a	1	1			36		
Drag. 24/25	26	21			23, 27, 38-41, 49		
Drag. 27b	12	12			24, 28-30, 42		
Drag. 27c	7	7			33, 43		
Drag. 27	13	13					
Cup	15	15					
Drag. 35	1	1					
Drag. 29	4	3			31, 32, 34, 44		
Drag. 30	1	1					
Unc.	27	1					
Total residuality of the context: 3,6%							

Table 2 – Quantification of the Flavian SU from the baths (*thermae*).

2.3. Flavian-Trajanic phase

In this stratigraphical phase, the rate of residual fine wares remains very low (4,5%). Compared to the previous phase, we observe the consolidation of the position of La Rioja, which reaches 54,5% of the total, double that of La Graufesenque (26,6%), which loses control of the market of *Ammaia*, while Andújar maintains its weak presence (4,5%).

Among the South Gaulish *terra sigillata* we distinguish the single residual type – Ritt. 8, the continuation of older forms Drag. 15/17 –, and the predominance of Flavian types – Drag. 36 (with barbotine trailed leaves) and Drag. 37a. Candidates for Drag. 27c, of which there are only a few small sherds, might actually be Drag. 27b (with a rounded rim), but the absence otherwise of 27b, which was dominant in the previous phase, leads us to suggest that it is indeed only the later type (Drag. 27c) that is present in this level.

This stratigraphical phase at *Ammaia* reinforces the idea of a maritime trade route preferred by the La Graufesenque merchants from the Flavian time onwards (Quaresma, 2012: 221, fig. 98 and anexo 2, tab. 46; Quaresma, 2018b): contexts of the last quarter of the 1st century AD from Chãos Salgados (*Mirobriga*), located 15 km from the coast, show 40% of South Gaulish *terra sigillata* as against 60% of the Hispanic production, though the island of Pessegueiro presents reverse statistics (Silva and Soares, 1993).

Ammaia, about 200 km inland, reinforces the authority of this predominant Hispanic trade (mainly La Rioja) that is even more outstanding in *Augusta Emerita*. In the capital, the South Gaulish *terra sigillata* never reached high figures; in the sector of 'suburbio norte' it is hegemonic in the Julian-Claudian SU, but also in several Vespasian-Domitian SUs. In these, despite a South Gaulish predominance in some few strata, and though the situation is balanced in SU 1473, yet it is the Hispanic predominance that is very clear in most of the SU (Bustamante Álvarez, 2013). According to the author, in the SU dating from 90-100 AD, South Gaulish imports are already weak and their repertoire is reduced to Drag. 15/17, 37 and 35/36.

The latest imports of La Graufesenque may be witnessed in the SU from the beginning of Trajan’s reign (Bustamante Álvarez, 2013: 153, 171). This situation accords very well with the evolution in Ammaia, where in the second quarter of the 2nd century AD, there is seen but a single individual of La Graufesenque.

Type	Frag.	MNI	MNI Prod.	% MNI Prod.
Drag. 15/17	2	1	8	26,6
Drag. 27c	4	4		
Drag. 36	1	1		
Drag. 37a	1	1		
Ritt.8	1	1		
Unc.	5			
Total residuality of the context: 4,5%				

Table 3 – Quantification of the level 4 (Flavian-Trajanic), from 'torre pequena' at 'Porta Sul' sector.

2.4. The 125-150 AD phase

This phase contains 114 fine ware sherds and 40 MNI. The SU called 'vala do estacionamento', a large ditch filled in the second quarter of the 2nd century AD, has three productions of terra sigillata, each of whose representation is low. Italian and South Gaulish terra sigillata are already residual (2% each). Andújar, even though still active in its production center, provided only five unidentifiable fragments. Does this pattern mean that potters from Andújar, who were present in the Ammaia market during the Flavian period, are now unable to compete in the domestic markets of the Southern Lusitania? La Rioja exerts massive control, with 85,4% of the total in the phase.

3. South Gaulish assemblage from Ammaia (stratified and unstratified vessels)

3.1. Potter stamps

The 19 South Gaulish stamps include ten potters, slightly under the sway of three persons with two stamps each (Albinus, Iunius and Murrus or -Mur) (Fig. 5). The assemblage has a focus between AD 40 and 80/90: Murrus or -Mur and Passenus, as well as Chrestus, being three potters of the latest phase, who might go back to Claudius, or Nero, respectively. The other seven potters are active between AD 40 and 70/80 (Firmus i, Gallicanus ii, Salvetus and Successus) or between AD 50 and 70/80 (Albinus, Iunius and Primus). The stratigraphy of the baths shows that Murrus or -Mur actually begins his activity in the Claudian-Neronian period, while Gallicanus ii, Iunius and Passenus appear normally in the Flavian SU. This period becomes the main chrono-stratigraphical one for Ammaia, with six stamps, thrice the number in the Claudian-Neronian phase.



Fig. 5 – South Gaulish potters’ stamps from Ammaia.

Potter	Stamp	Die shape	Type	Phase	Sector	Fig.
<i>Albinus</i>	ALBINI	Rectangular	Plate		Casa do Deão	Fig. 5, 52
	OF ALBIN	Rectangular with rounded minor sides	Plate		Casa do Deão	Fig. 5, 53
<i>Crestus</i>	CREST[Rectangular	Plate		Porta Sul	
<i>Firmus</i> (i)	FIRMO	Rectangular with rounded minor sides	Cup		Thermae	Fig. 5, 54
<i>Gallicanus</i> (ii)]ICANI	Rectangular with rounded minor sides	Unc.	Flavian	Thermae	Fig. 4, 46
<i>Ivnius</i>	IV NINV	Rectangular	Cup		Funerary	
	OF.IVNII	Rectangular	Drag. 24/25	Flavian	Thermae	Fig. 4, 45
<i>Murrus</i> or <i>Mur-</i>]MRI	Rectangular with rounded minor sides	Cup	Claudian-Neronian	Thermae	Fig. 3, 11
]MV (?)	Rectangular with rounded minor sides	Cup	Claudian-Neronian	Thermae	
<i>Passenus</i> ?]SM	Rectangular	Cup	Flavian	Thermae	
<i>Primus</i>	OF.PRIM[Rectangular with rounded minor sides	Cup		Thermae	Fig. 5, 55
<i>Salvetus</i>]ALVETV	Rectangular with rounded minor sides	Unc.		Forum	
<i>Successus</i>]SVCCES	Rectangular with rounded minor sides	Cup		Thermae	Fig. 5, 56
]I	Rectangular with rounded minor sides	Plate	Flavian	Thermae	
	Unreadable		Cup	Flavian	Thermae	
	Unreadable	Rectangular with rounded minor sides	Cup	Flavian	Thermae	
	OF[Rectangular with rounded minor sides	Cup		Thermae	
	Unreadable	Rectangular	Unc.		Parking	
			Rectangular	Unc.		Porta Sul

Table 4 – South Gaulish potters' stamps from *Ammaia*.

3.2. Typological assemblage

South Gaulish imports from La Graufesenque are the second most important production to appear in Early Empire. Their repertoire is diverse, with a few forms particularly eminent. The binomial Drag. 15/17 and 24/25 statistically rate higher than Drag. 18 and 27. The last is affected because Drag. 27 (in its variants b and especially c) overlaps chronologically with it. From the second quarter of the 1st century until AD 60 other forms are encountered, but only in small amounts: Drag. 16, 19, 22, 12, Ritt. 1, 5 and 9.

During this period, Ritt. 8 seems to begin its (secondary) role, followed by the Flavian Drag. 35 and 36, and from time to time by the Flavian service D1 and Vertault A (Polak, 2000; Passelac and Vernhet, 1993; Vernhet, 1976). Among the decorated forms, Drag. 29 is not that important, nor is Drag. 37. Drag. 30 becomes the key form now. Decorated sherds demonstrate an even balance maintained from the zenith of its popularity (AD 40-60) (Fig. 4, 31, 32, 34) into a transitional stage (AD 60-80) (Fig. 6, 69, 72) – with 19 and 20 fragments, respectively. However the period of decline (AD 80-120) (Fig. 6, 70) has yielded only three sherds (Passelac and Vernhet, 1993).

The only vessels from Montans, all Drag. 30, belong to the 40s AD, judging from the presence of scroll and beaded lines. There is a single sherd from La Graufesenque with a marbled slip, which belongs to a Drag. 29 with beaded lines, and so is to be placed in the period prior to the middle of the 1st century AD (Fig. 6, 71) (Danell, Dickinson and Vernhet, 1998).

Stratigraphically, La Graufesenque largely dominate the Claudian-Neronian SU with 59,6%, in which Drag. 18 already exceeds Drag. 15/17, and Drag. 27 exceeds Drag. 24/25. Alongside some scarce dishes, Drag. 19 and Ritt. 1, the only decorated form is that of Drag. 30.

The Flavian phase represents a decrease in the heavy presence of La Graufesenque, that remains, nevertheless, the main contributor at 38,8%. The extensive assemblage comprises the dominant Drag. 27, followed by Drag. 24/25, while Drag. 15/17 and 18 are not much in evidence. An old dish-form, Drag. 16, hangs on, as does the cup Ritt. 5, but some later individuals are now present: Ritt. 8 and, above all, Drag. 36, service D1 and Drag 35. Drag. 37 is absent from this phase, its place taken by the decorated types Drag. 29 and 30.

The South Gaulish role declines during the Flavian-Trajanian SU from 'Porta Sul', with 26,6% – now but around half that achieved by La Rioja. The assemblage is very small, but contains Drag. 15/17, 36, 37, Ritt. 8 and especially Drag. 27.

Region	Type	Frag.	MNI	MNI Prod.	% MNI Prod.	Fig.
South Gaulish - La Graufesenque	Drag. 15/17	85	52	582	15,9	Fig. 6, 59, 60
	Drag. 16	3	3			Fig. 4, 35
	Drag. 18	58	47			Fig. 3, 6, 13; Fig. 4, 37, 47; Fig. 6, 61, 62
	Drag. 19	1	1			Fig. 3, 2
	Drag. 22	1	1			
	Drag. 24/25	95	79			Fig. 3, 1, 3, 4, 7, 8, 9, 12, 21, 22; Fig. 4, 23, 27, 38-41, 45, 49; Fig. 6, 63
	Drag. 27	73	64			
	Drag. 27a	1	1			
	Drag. 27b	34	34			Fig. 3, 10, 19, 18; Fig. 4, 24, 28-30, 42; Fig. 6, 65, 64
	Drag. 27c	47	47			Fig. 4, 33, 43; Fig. 6, 66
	Drag. 29	8	5			Fig. 4, 31, 32, 34, 44
	Drag. 30	20	16			
	Drag. 33	8	7			Fig. 6, 67
	Drag. 35	9	9			
	Drag. 36	20	19			Fig. 4, 48; Fig. 6, 68
	Drag. 37	6	4			Fig. 6, 70
	Drag. 37a	5	5			Fig. 6, 69
	Drag. 37b	4	3			
	Déch. 67	1	1			
	Ritt. 1	4	4			Fig. 3, 5, 19, Fig. 6, 57
	Ritt. 12	2	2			Fig. 6, 58
	Ritt. 5	2	1			
	Ritt. 5a	1	1			Fig. 4, 26
	Ritt. 5c	7	4			Fig. 3, 14, Fig. 4, 50
	Ritt. 8	1	1			
	Ritt. 8a	1	1			Fig. 4, 36
	Ritt. 9b	2	2			Fig. 3, 15, 20
	Service D1	1	1			Fig. 4, 51
	Vertault A	2	1			
	Closed-shape	1	1			
Plate	95	95	Fig. 5, 52, 53,			
Cup	69	69	Fig. 3, 11, Fig. 5, 54, 55, 56			
Bowl	1	1				
Unc.	458		Fig. 4, 46; Fig. 6, 71			
South Gaulish - Montans	Drag. 30a	1	1	1	0,02	

Table 5 – Quantification of the South Gaulish terra sigillata from Ammaia, within the total amount of fine wares.

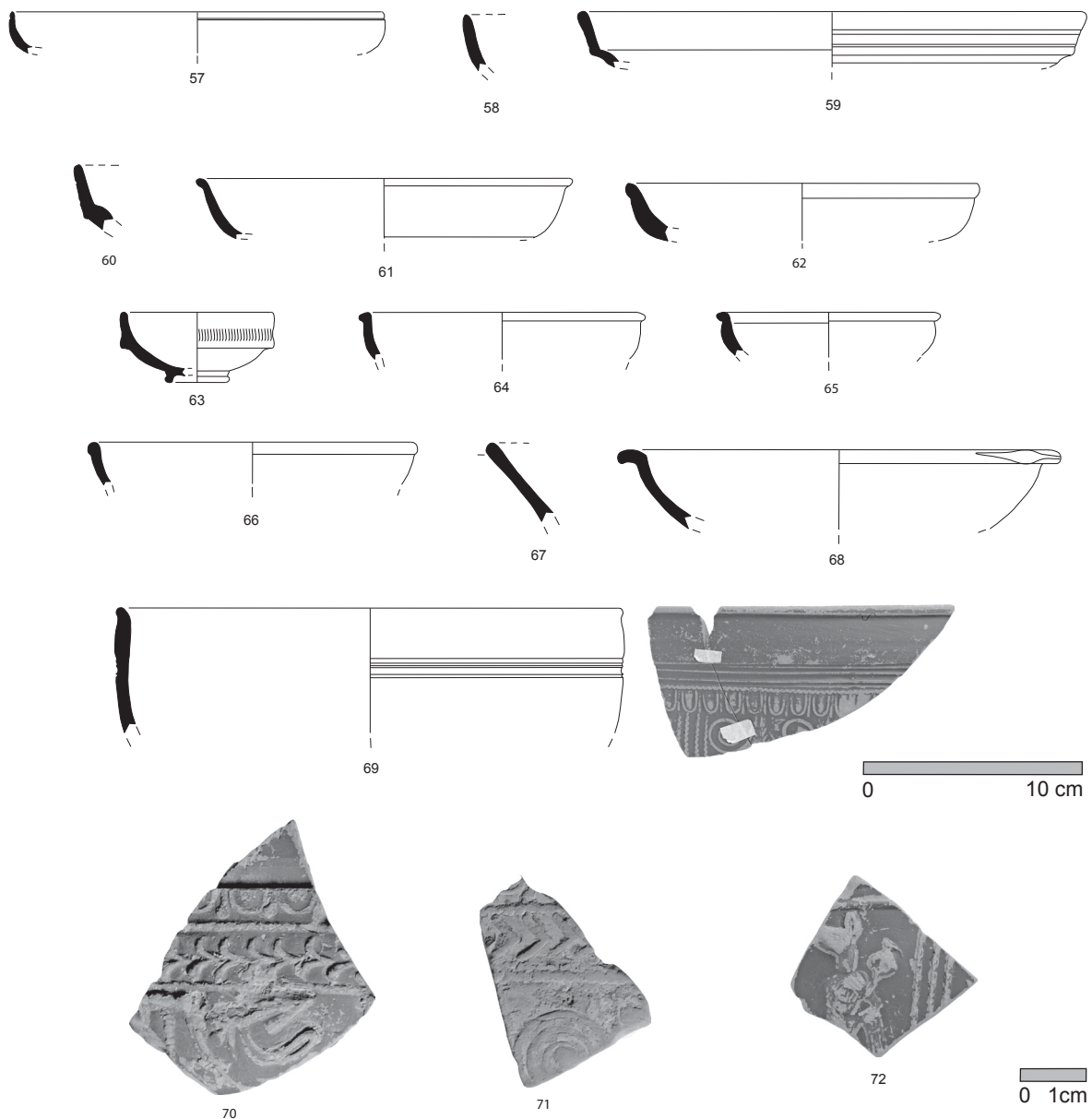


Fig. 6 – Unstratified South Gaulish *terra sigillata* from *Ammaia*.

The isolated plate from the second quarter of the 2nd century AD shows that this trade had drawn to a close around the end of the 1st century AD or the beginning of the next century.

From **Fig. 7** one can see the chrono-typological evolution of the South Gaulish imports in *Ammaia*. It has become clear that Italian imports are scarce, even though they might be around until the Flavian phase, when they are well enough represented in the stratigraphy. South Gaulish products dominate the market in the middle of the 1st century AD, at which time the Hispanic *terra sigillata* is still scarce in the Claudian-Neronian levels. It is possible thus that the hypothetical high frequency granted to the Hispanic production before about AD 70 may not reflect the reality, taking into account the stratigraphical data. According to this line of reckoning, South Gaulish *terra sigillata* may control the market of *Ammaia* between AD 40 and 70. The SU from the second quarter of the 2nd century AD help us understand that the first quarter of this century is the final period that South Gaulish products are traded in *Ammaia*, at a time when the Hispanic goods have essentially already taken over.

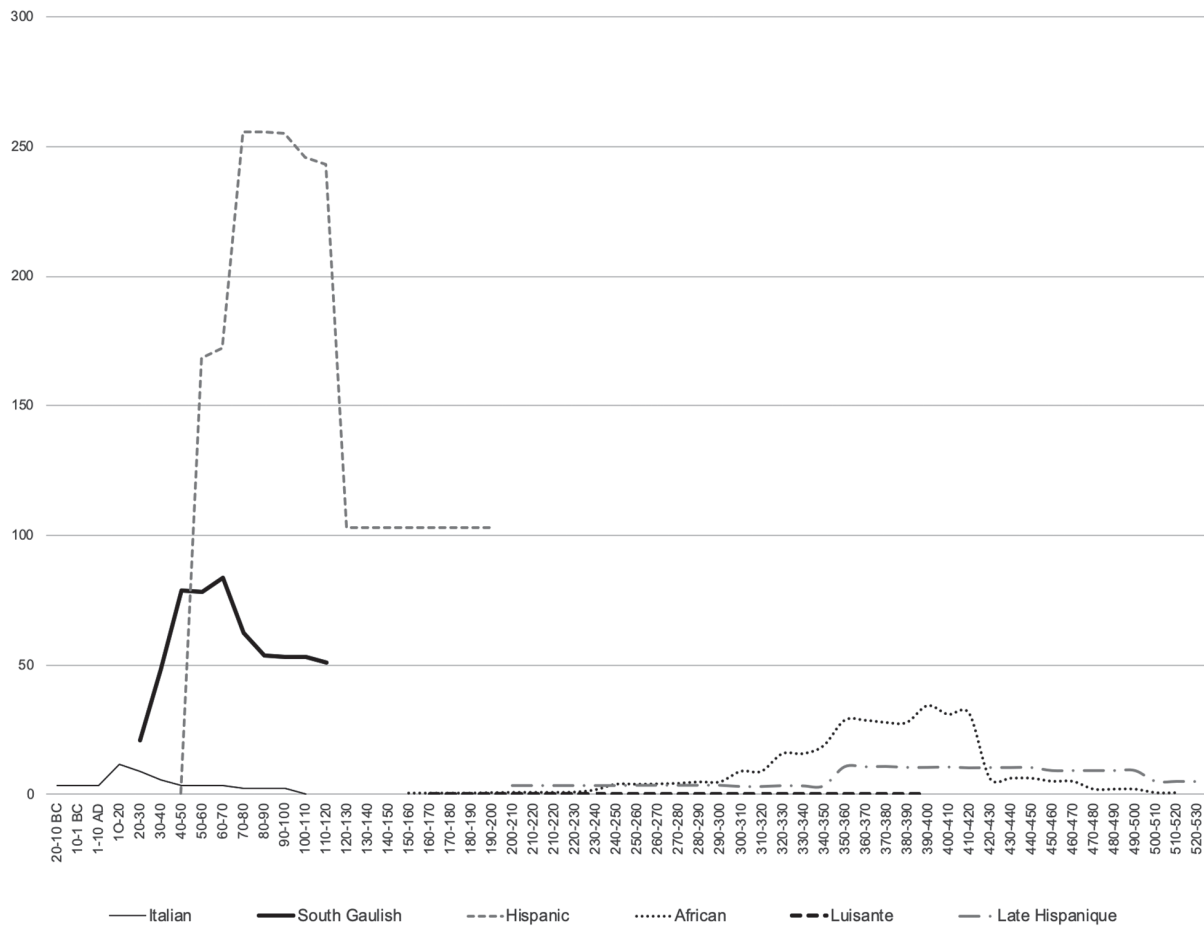


Fig. 7 – Chronological evolution of terra sigillata imports at Ammaia: MNI.

4. Some final remarks

South Gaulish *terra sigillata* from Ammaia is by now the most important body of material for this ceramic class with such systematic information concerning its stratigraphical progression, all thanks to the fieldwork developed during the RadioPast Project in the baths of the town (Corsi and Vermeulen, 2012; Corsi, 2014). This site has produced not only important strata on the Flavian and Antoninian periods, but also one the most important bodies of stratigraphical data on Claudian-Neronian levels in the Iberian Peninsula, where generally this period is scarcely represented ceramically. Ammaia illustrates the competition between South Gaulish and Hispanic potters (mainly from La Rioja) and reveals how these latter only timidly attempted their penetration into the province of Lusitania previous to around 70 AD.

CATALOGUE OF SOUTH GAULISH TERRA SIGILLATA

Figure 3. South Gaulish *terra sigillata* from the Claudian-Neronian SU.

- 1 - AM-09-B-[104]-2 – Drag. 24/25.
- 2 - AM-09-B-[104]-1 – Drag. 19.
- 3 - AM-09-B-[114]-2+3 – Drag. 24/25.
- 4 - AM-09-B-[135]-1 – Drag. 24/25.
- 5 - AM-09-B-[154]-10 – Ritt. 1.
- 6 - AM-09-B-[154]-8+9 – Drag. 18.
- 7 - AM-09-B-[154]-3+7 – Drag. 24/25.
- 8 - AM-09-B-[154]-1 – Drag. 24/25.
- 9 - AM-09-B-[170]-8 – Drag. 24/25.
- 10 - AM-09-B-[170]-12 – Drag. 27b.
- 11 - AM-09-B-[103]-1 – bowl - potter *Murrus* or *Mur-*.
- 12 - AM-09-B-[174]-1 – Drag. 24/25.
- 13 - AM-11-B-[200]-11 – Drag. 18.
- 14 - AM-11-B-[200]-2 – Ritt. 5c.
- 15 - AM-11-B-[200]-18 – Ritt. 9b.
- 16 - AM-11-B-[200]-12 – Drag. 24/25.
- 17 - AM-11-B-[200]-20 – Drag. 27b.
- 18 - AM-11-B-[201]-9 – Drag. 27b.
- 19 - AM-11-B-[206]-s/n inv. – Ritt. 1.
- 20 - AM-11-B-[206]-6 – Ritt. 9b.
- 21 - AM-11-B-[206]-5 – Drag. 24/25.
- 22 - AM-11-B-[206]-8 – Drag. 24/25.

Figure 4. South Gaulish *terra sigillata* from the Flavian SU of the baths (thermae).

- 23 - AM-08-B-[79]-7 – Drag. 24/25.
- 24 - AM-08-B-[79]-5 – Drag. 27b.
- 25 - AM-08-B-[79]-1 – Drag. 27c.
- 26 - AM-09-B-[90]-43 – Ritt. 5a.
- 27 - AM-09-B-[90]-41 – Drag. 24/25.
- 28 - AM-09-B-[90]-48 – Drag. 27b.
- 29 - AM-09-B-[90]-7 – Drag. 27b.
- 30 - AM-09-B-[90]-47 – Drag. 27b.
- 31 - AM-09-B-[90]-25 – Drag. 29.
- 32 - AM-09-B-[90]-21 – Drag. 29.
- 33 - AM-09-B-[130]-3 – Drag. 27c.
- 34 - AM-09-B-[133]-2 – Drag. 29.
- 35 - AM-09-B-[147]-34 – Drag. 16.
- 36 - AM-09-B-[147]-10 – Ritt. 8a.

- 37 - AM-09-B-[147]-39 – Drag. 18.
- 38 - AM-09-B-[147]-38 – Drag. 24/25.
- 39 - AM-09-B-[147]-40 – Drag. 24/25.
- 40 - AM-09-B-[147]-30 – Drag. 24/25.
- 41 - AM-09-B-[147]-19 – Drag. 24/25.
- 42 - AM-09-B-[147]-42 – Drag. 27b.
- 43 - AM-09-B-[147]-22 – Drag. 27c.
- 44 - AM-09-B-[147]-26 – Drag. 29.
- 45 - AM-09-B-[147]-5 – Drag. 24/25 – potter *lunius*.
- 46 - AM-09-B-[147]-32 – unc. – potter *Gallicanus* ii.
- 47 - AM-09-B-[149]-4 – Drag. 18.
- 48 - AM-11-B-[197]-2 – Drag. 36.
- 49 - AM-11-B-[221]-4 – Drag. 24/25.
- 50 - AM-11-B-[221]-2 – Ritt. 5c.
- 51 - AM-11-B-[221]-5 – Service D1.

Figure 5. South Gaulish potters' stamps from *Ammaia*.

- 52 - AM-A-CD-67 – Plate – potter *Albinus*.
- 53 - AM-A-CD-119 – Plate – potter *Albinus*.
- 54 - AM-08-B-[0]-14 – Cup – potter *Firmus* i.
- 55 - AM-08-B-[68]-37 – Cup – potter *Primus*.
- 56 - AM-11-B-[203]-2 – Cup – potter *Successus*.

Figure 6. Unstratified South Gaulish *terra sigillata* from *Ammaia*.

- 57 - 96/88 – Ritt. 1.
- 58 - 2787 – Ritt. 8.
- 59 - 96/117+118 – Drag. 15/17.
- 60 - AM-A-CD-86 – Drag. 15/17.
- 61 - AM-01-B-[Q2533]-30 – Drag. 18.
- 62 - S./n. inv. – Drag. 18.
- 63 - AM-2449 – Drag. 24/25.
- 64 - AM-96-B-[Q2537]-44 – Drag. 27b.
- 65 - 7138 – Drag. 27b.
- 66 - AM-01-B-[Q2635]-47+49 – Drag. 27c.
- 67 - 1594 – Drag. 33.
- 68 - AM-01-B-[Q2533]-21 – Drag. 36.
- 69 - AM-01-B-[Q2733]-82 – Drag. 37a.
- 70 - S.00/331 – Drag. 37.
- 71 - AM-A-CD-136 - marmorata – Unc.
- 72 - AM-01-B-[Q2635]-31 – Unc.

BIBLIOGRAPHY

- AQUILUÉ ABADIAS, J.; CASTANYER, P.; SANTOS, M.; TREMOLEDA, J. (2005) – Presencia de producciones sigillatas sudgálicas en las excavaciones realizadas en el foro de la ciudad romana de Empúries (L'Escala, Alt Empordà). In NIETO, X.; ROCA, M.; VERNHET, A.; SCIAU, P., eds. - *La difusió de la terra sigillata sudgàlica al nord d'Hispania*. Barcelona: Museu d'Arqueologia de Catalunya (Monografies; 6), p. 199-239.
- BÉMONT, C. (1976) - *Recherches méthodologiques sur la céramique sigillée. Les vases estampillés de Glanum* (Boletín de l'École Française à Rome; 227).
- BUSTAMANTE ÁLVAREZ, M. (2013) – *Terra Sigillata hispànica tardia en Augusta Emérita (Mérida, Badajoz). Valoración tipocronológica a partir de los vertederos del subúrbio norte*. (Anejos de Archivo Español e Arqueología; 65). Madrid.
- CORSI, C., ed. (2014) – *Ammaia. II. The excavation contexts 1994-2011*. Ghent: Academia Press (Archaeological Reports Ghent University; 9).
- CORSI, C.; VERMEULEN, F., eds. (2012) - *Ammaia I: The Survey. A Romano-Lusitanian Townscape Revealed*. Gent Academia Press.
- CORSI, C.; VERMEULEN, F., eds. (2013) – *Ammaia. A Roman town in Lusitania*. Évora: CIDEHUS/Universidade de Évora.
- DANNELL, G.; DICKINSON, B.; VERNHET, A. (1998) – Ovolos on Dragendorff form 30 from the collections of Frédéric Hermet and Dieudonné Rey. In BIRD, J., ed. - *Form and fabric. Studies in Rome's material past in honour of B. R. Hartley* (Oxbow Monograph; 80), p.69-110.
- FARINE, B. (1996) – La Graufesenque: évolution d'une chaussée au cours du I^{er} siècle de notre ère: structures et céramiques sigillées. *SFECAG. Actes du Congrès de Dijon*, p. 209-236.
- FERNANDES, L. (2001) – Capitéis romanos de Ammaia (S. Salvador de Aramenha – Marvão). *O Arqueólogo Português*. Série IV. 19, p.95-158.
- GENIN, M., ed. (2007) – *La Graufesenque (Millau, Aveyron)*. Vol. II (Sigillées lisses et autres productions). Aquitania: Éditions de la Fédération Aquitania.
- GENIN, M. ; RASCALOU, P. (2004) – Un ensemble homogène du milieu du I^{er} s. ap. J.-C. : le matériel céramique de la fosse 9003. In THERNOT, R. ; BEL, V. ; MAUNE, S., dirs. – *L'établissement rural antique de Soumaltre (Aspiran, Hérault) – terme, auberge, nécropole et atelier de potiers en bordure de la voie Cessero – Condatomagus (I^{er} lie s. apr. J.-C.)*. Montagnac: Ed. Monique Mergoïl (Collection Archéologie et Histoire ; 14), p. 133-168.
- GODARD, C. (1992) – Une réserve de céramiques de l'époque de Claude à Vienne (Isère). *SFECAG. Actes du Congrès de Tournai*, p. 239-264.
- GUERRA, A. (1995) - *Plínio-o-Velho e a Lusitânia*. Lisboa: Edições Colibri.
- HERMET, F. (1934) - *La Graufesenque (Condatomago)*. 2 vols.. Paris: Librairie Ernest Leroux.
- HOFMANN, B. (1971-1972.) - Catalogue des estampilles sur vaisselle sigillée. 1, 2, 3. *Notice Technique*. 21, 22, 23. Groupe d'Archéologie Antique du Touring Club de France.
- IRCP = ENCARNAÇÃO, J. d' (1984) - *Inscrições romanas do conventus pacensis*. Coimbra: Faculdade de Letras de Coimbra/Instituto de Arqueologia.
- MANTAS, V. G. (2000) – A sociedade luso-romana do município de Ammaia. In GORGES, J.-G.; NOGALES BASARRATE, T., coords. - *Sociedad y cultura en Lusitania romana. IV mesa internacional*. Mérida (Série Estudos Portugueses; 13), p.391-420.
- MANTAS, V. G. (2010) – *Ammaia e civitas igaeditanorum*. Dois espaços forenses lusitanos. In NOGALES BASARRATE, T., ed. – *Ciudad y foro en Lusitania romana*. Mérida: Museo Nacional de Arte Romano (Studia lusitana; 4), p.167-188.
- MAYET, F. (1978) - Les importations de sigillées à Mérida au I^{er} siècle de notre ère. *Conimbriga*. 17, p. 79-100.
- MEES, A.W. (1995) – *Modellsignierte Dekorationen auf Südgallischer Terra Sigillata*. Stuttgart: Kommissionsverlag / Konrad Verlag (Forschungen und Berichte zur Vor-und Frühgeschichte in Baden-Württemberg; 54).

- NIETO PRIETO, J.; JOVER ARMENGOL, A.; IZQUIERDO TUGAS, P.; PUIG A. M.; ALAMINOS, A.; MARTIN, A.; PUJOL, M.; PALOU, H.; SERGI, C. (1989) - *Excavacions arqueològiques subaquàtiques a Cala Culip*. 1. Girona: Centres d'Investigacions Arqueològiques de Girona (sèrie monogràfica; 9).
- NIETO, J.; PUIG, A. M. (2001) – *Culip IV. La terra sigillata decorada de La Graufesenque*. Girona: Museu d'Arqueologia de Catalunya. (Monografies del Casc; 3; Série Monografica / Centre d'Investigacions de Girona; 9).
- OSWALD, F. (1931-1964) - *Index of potters' stamps on terra sigillata (samian ware)*.
- OSWALD, F.; PRYCE, T. D. [(1920)1966] - *An introduction to the study of terra sigillata. With a preface and corrigenda & addenda by Grace Simpson*. London: Gregg Press.
- PASSELAC, M.; VERNHET, A. (1993) - Céramique sigillée sud-gauloise. *Lattara*. 6, p. 569-580.
- PEREIRA, S. (2005) – A freguesia da Aramenha sob o domínio romano. In OLIVEIRA, J., coord. – *São Salvador da Aramenha. História e memórias da freguesia*. C. M. Marvão / Ed. Colibri (*Ibn Maruan*; número especial), p. 35-62.
- PEREIRA, S. (2009) – *A cidade romana de Ammaia. Escavações arqueológicas. 2000-2006*. (*Ibn Maruan*: nº especial II). Edições Colibri / C M. Marvão.
- POLAK, M. (2000), *South Gaulish terra sigillata from Vechten*. Nijmegen (*Rei Cretariae Romanae Fautorum Acta; supplementum* 9).
- QUARESMA, J. C. (2012) - *Economia antiga a partir de um centro de consumo lusitano. Terra sigillata e cerâmica africana de cozinha em Chãos Salgados (Mirobriga?)*. Lisboa: UNIARQ (*Estudos e Memórias*, 4).
- QUARESMA, J. C. (2014a) - The fine wares. *Forum*. Catalogue. In CORSI, C., ed. – *Ammaia. II. The excavation contexts 1994-2011*. Ghent: Academia Press (*Archaeological Reports Ghent University*; 9), p. 55-56.
- QUARESMA, J. C. (2014b) - The fine wares. *Baths*. Catalogue. In CORSI, C., ed. – *Ammaia. II. The excavation contexts 1994-2011*. Ghent: Academia Press (*Archaeological Reports Ghent University*; 9), p. 95-114.
- QUARESMA, J. C. (2014c) - The fine wares. *Porta Sul*. Catalogue. In CORSI, C., ed. – *Ammaia. II. The excavation contexts 1994-2011*. Ghent: Academia Press (*Archaeological Reports Ghent University*; 9), p. 151-164.
- QUARESMA, J. C. (2014d) - The fine wares. *Conclusions*. In CORSI, C., ed. – *Ammaia. II. The excavation contexts 1994-2011*. Ghent: Academia Press (*Archaeological Reports Ghent University*; 9), p. 279-300.
- QUARESMA, J. C. (2018a) - Contextos alto-imperiales de Chãos Salgados, Santiago do Cacém-Mirobriga? (*Lusitania*). In RUIZ MONTES, P.; PEINADO ESPINOSA, M. V.; FERNÁNDEZ GARCÍA, M. I., eds. – *Estudios para la configuración de las facies cerámicas altoimperiales en el sur de la Península Ibérica*. Archaeopress (*RLAMP*; 11), p. 32-58.
- QUARESMA, J. C. (2018b) – Contextos alto-imperiales de Ammaia, São Salvador de Aramenha (*Lusitania*). In RUIZ MONTES, P.; PEINADO ESPINOSA, M. V.; FERNÁNDEZ GARCÍA, M. I., eds. – *Estudios para la configuración de las facies cerámicas altoimperiales en el sur de la Península Ibérica*. Archaeopress (*RLAMP*; 11), p. 59-89.
- RIBEIRO, O. (1991) - *Portugal. O Mediterrâneo e o Atlântico*. 6ª edição. Lisboa: Livraria Sá da Costa.
- SANCHEZ, C.; SILVÈRÈANO, S. (2005) – Le port de Narbonne et la diffusion des sigillées de la Graufesenque: étude préliminaire de la Collection Bouscaras. In : NIETO, X.; ROCA, M.; VERNHET, A; SCIAU, P., eds. - *La difusió de la terra sigillata sudgàlica al nord d'Hispania*. Barcelona: Museu d'Arqueologia de Catalunya (*Monografies*; 6), p. 163-177.
- SILVA, C. T.; SOARES, J. (1993) - *Ilha do Pessegueiro. Porto Romano da Costa Alentejana*. Lisboa: Instituto da Conservação da Natureza.
- TILHARD, J.-L. (2004) – *Les céramiques sigillées du Haut-Empire à Poitiers d'après les estampilles et les décors moulés*. SFECAG (*Supplément*; 2).
- TYERS, P. (1993) - The plain samian. In MANNING, W.H., ed. - *The Roman pottery. Report on the excavations at Usk. 1965-1976*. Cardiff: University of Wales Press, p. 127-62.
- VERMEULEN, F.; CORSI, C.; DE DAPPER, M. (2012) - Surveying the Townscape of Roman Ammaia in Portugal: An Integrated Geoarchaeological Investigation of the Forum Area. *Geoarchaeology: An International Journal*. 27, p. 123–139.

- VERMEULEN, F.; DE DAPPER M.; CORSI C.; DEPRES S. (2005) - Geoarchaeological observations on the Roman town of Ammaia. *Internet Archaeology*. 19.
- VERMEULEN, F.; Taelman, D. (2010) - From cityscape to landscape in Roman *Lusitania*: the *municipium* of Ammaia. In CORSI, C.; VERMEULEN, F., eds. - *Changing Landscapes. The impact of Roman towns in the Western Mediterranean (Proceedings of the International Colloquium, Castelo de Vide - Marvão 15th-17th May 2008)*. Bologna, p. 311-324.
- VERNHET, A. (1976) - Creation flavienne de six services de vaisselle a La Graufesenque. *Figlina*. 1, p. 13-27.
- VERNHET, A. (1981) - Un four de La Graufesenque (Aveyron): la cuisson des vases sigillées. *Gallia*. 39, p. 25-43.

The present volume is the outcome of a two-day International Workshop held at the School of Arts and Humanities in Lisbon on the subject “*A terra sigillata sudgálica no Sudoeste da Península Ibérica: circulação e consumo | South Gaulish terra sigillata in Southwest Hispania: circulation and consumption*”, organized by UNIARQ – Centre for Archaeology of the University of Lisbon (28th and 29th of September 2015).

The first day was dedicated to presenting the data about the varying consumption patterns of south Gaulish sigillata in different sites in Lusitania – such as Coimbra, *Ammaia*, Lisbon, Mérida, Tróia and also in sites in the Algarve and Alentejo regions, as well as at Braga (in *Tarraconensis*) and *Baelo Claudia* and Seville, in the former province of *Baetica*. The papers presented provide an up-to-date overview of the import for this tableware both in urban and rural contexts. The second day was a practical session to enable the participants (archaeologists, researchers and students) to learn about how to consult, use and feed information into the “Samian Research database”.

Este volume é o resultado do workshop internacional que teve lugar na Faculdade de Letras de Lisboa intitulado: “*A terra sigillata sudgálica no Sudoeste da Península Ibérica: circulação e consumo | South Gaulish terra sigillata in Southwest Hispania: circulation and consumption*”, organizado pela UNIARQ – Centro de Arqueologia da Universidade de Lisboa (28-29 de Setembro de 2015).

O primeiro dia foi dedicado à apresentação de comunicações sobre os padrões de consumo da *terra sigillata* sudgálica em diferentes sítios da Lusitania - como Coimbra, *Ammaia*, Lisboa, Mérida, Tróia e também de sítios no Algarve e no Alentejo, assim como Braga (na *Tarraconensis*) e *Baelo Claudia* and Sevilha, na antiga província da *Baetica*. O conjunto de estudos apresentados fornece uma panorâmica actualizada da diversidade de importação desta cerâmica de mesa em contextos urbanos e rurais. O segundo dia correspondeu a uma sessão prática permitindo aos participantes (arqueólogos, investigadores e estudantes) aprender como consultar, utilizar e alimentar a base de dados “Samian Research database”.