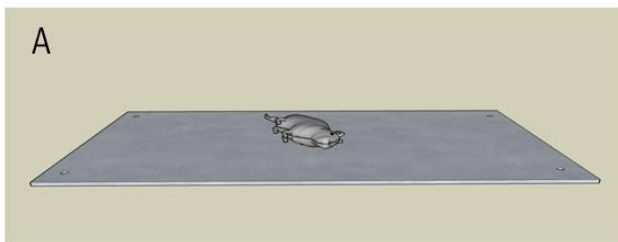


Appendix

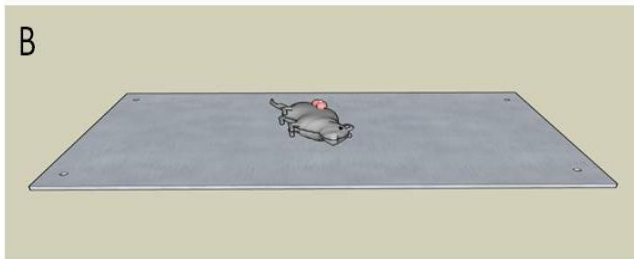
Methods

- Intravital imaging of thymus

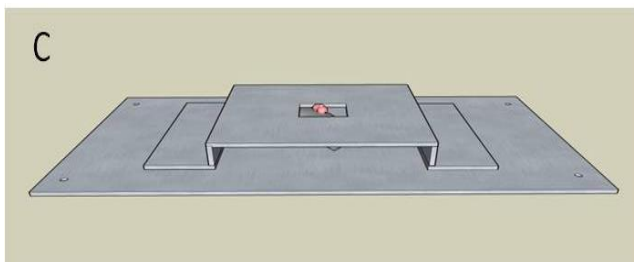
(A) The animal is deeply anesthetized and put on top of a two-photon adaptor plate;



B) The kidney (in red) containing the transplanted thymus (white) will be exposed by a small cut on skin and peritoneal cavity;

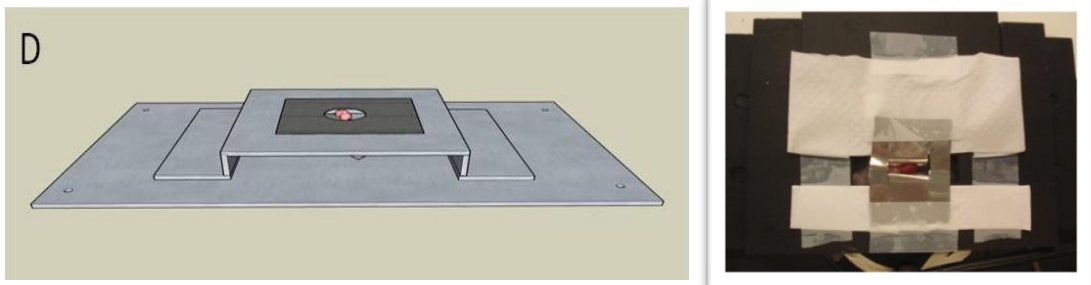


(C) A second adaptor is put on top of the animal to hold the heater;

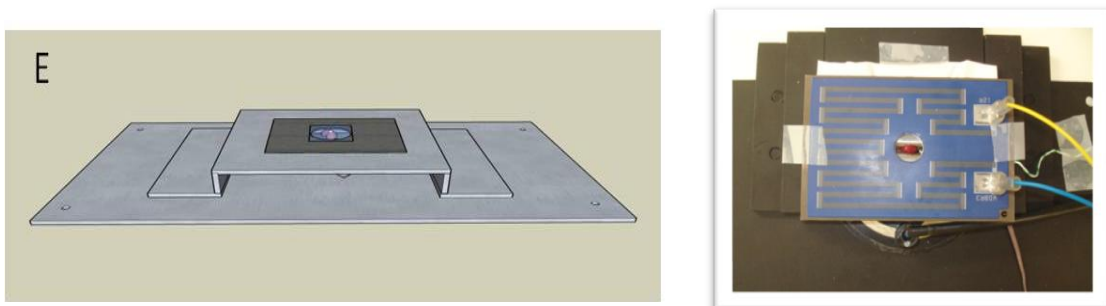


In vitro and *in vivo* studies of retinoic acid effect on mouse T cells

(D) The tissue holder (represented by a black sheet with a hole in the middle) is put on top of the second adaptor;



(E) The tissue heater with a glass slide will cover the transplanted thymus;



(F) The whole preparation is connected to heat-controller machines and transferred to the two-photon microscope.

