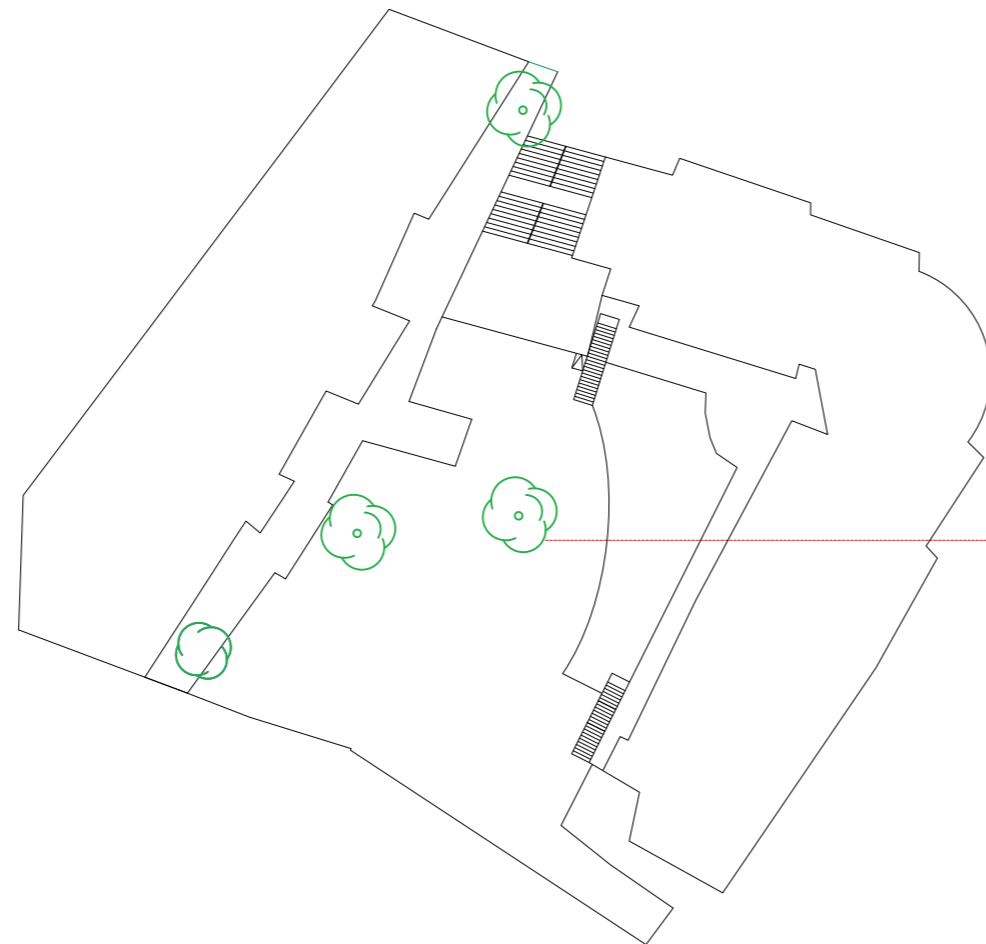
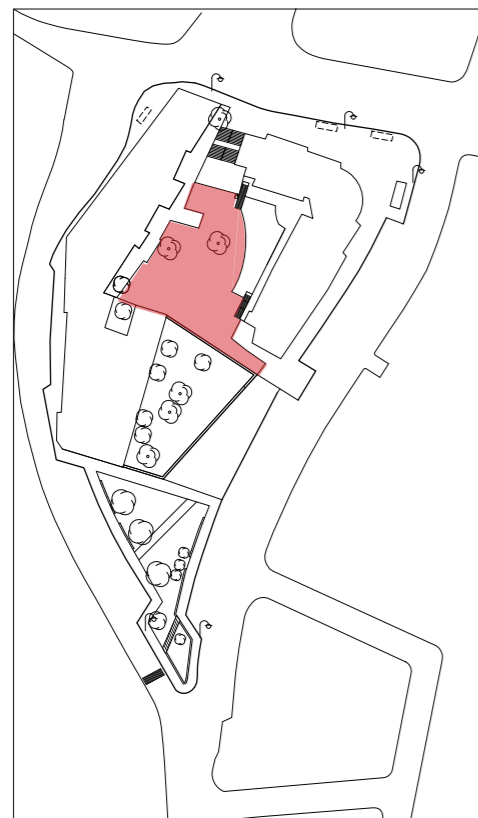

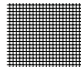


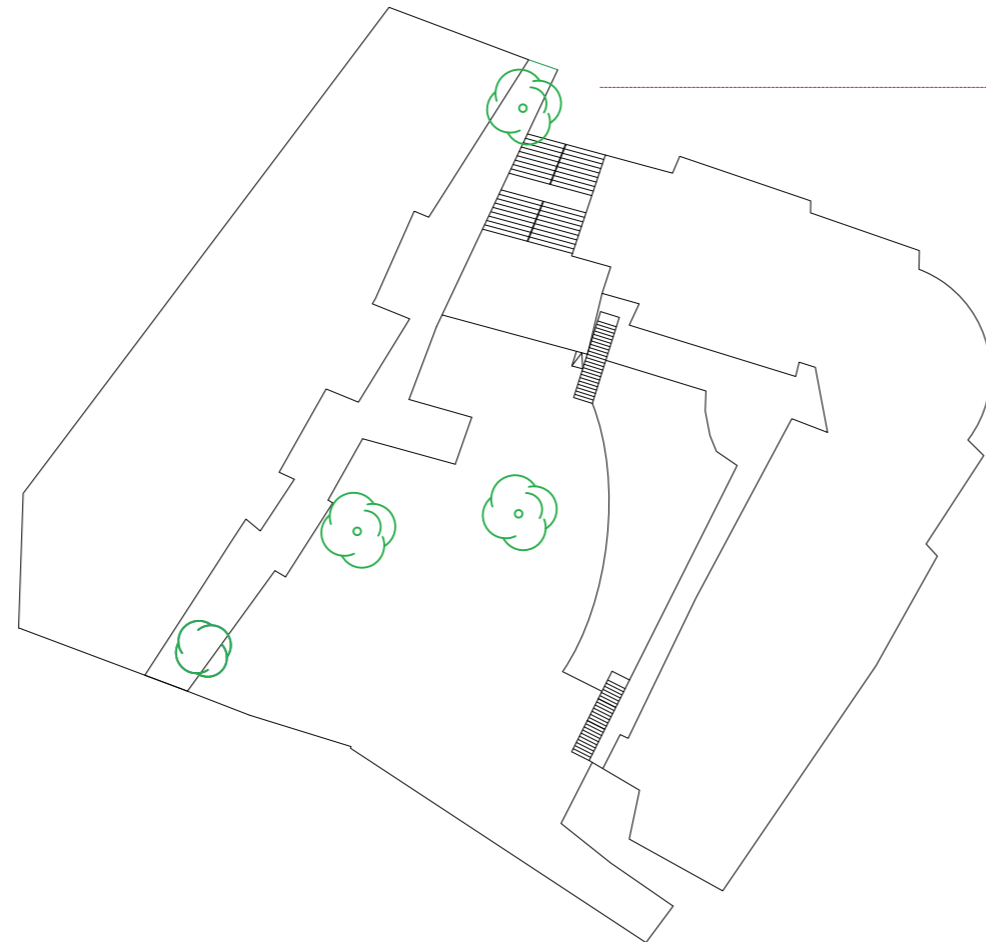
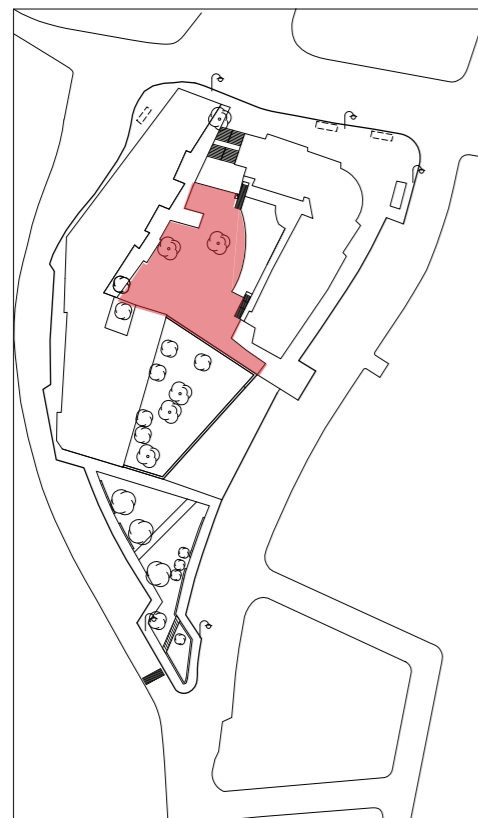
## PÁTIO INTERIOR - ESPAÇO HORTA



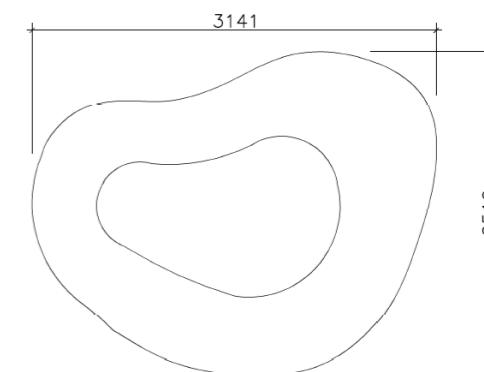
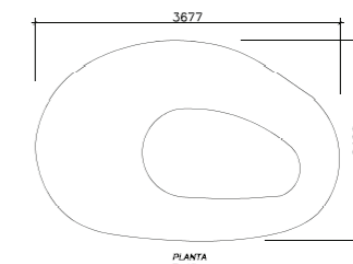
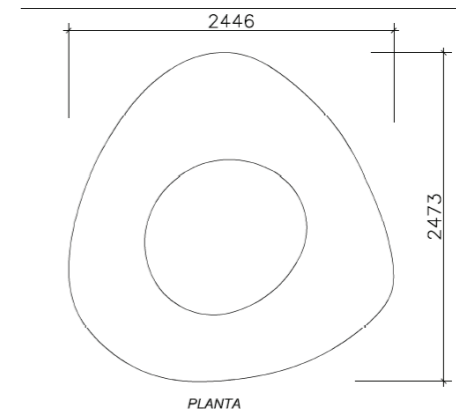
Para a criação do espaço de horta sugere-se o equipamento Vegetablespirit da marca Hurbz. O equipamento possui diferentes alturas, facilitando assim a utilização das crianças, permite ainda que estas sejam individuais.

-  Jardim Vertical
-  Calçada Portuguesa

# PÁTIO INTERIOR - ESPAÇO HORTA



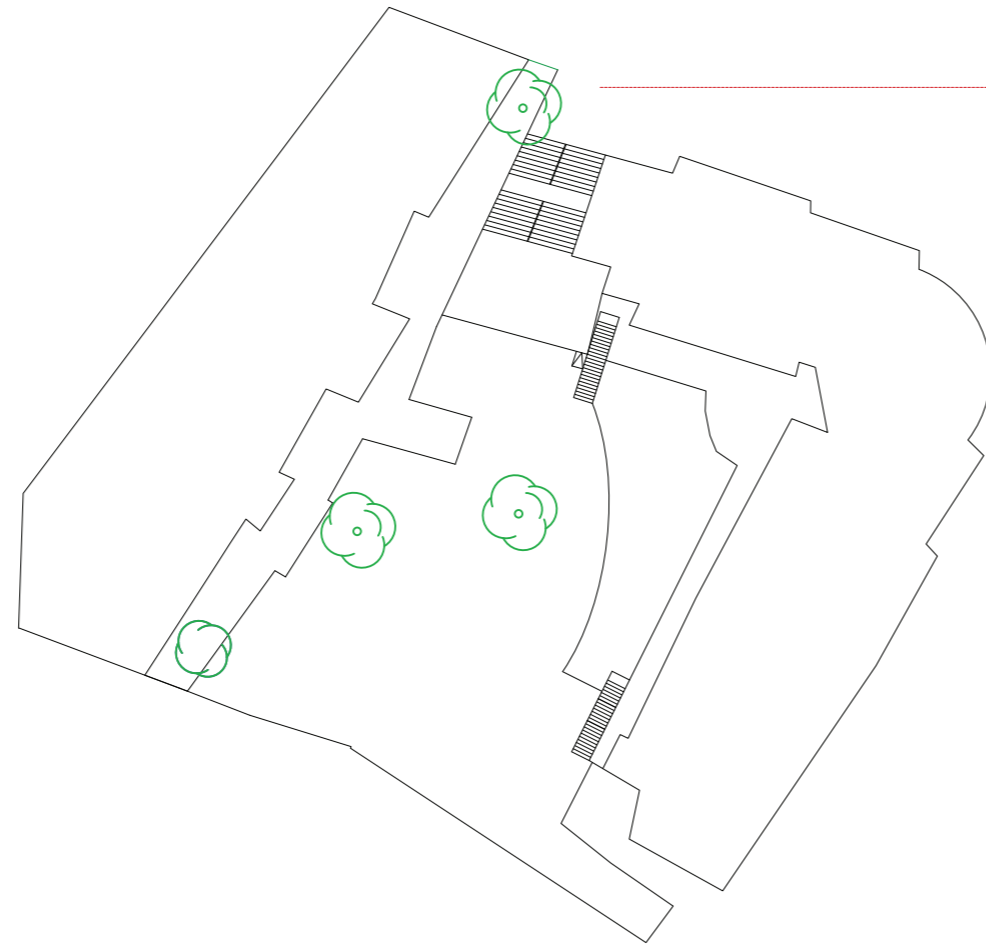
Sugere-se o equipamento Cell 1, Cell 2 e Cell 3 da empresa-  
Amop para a integração dos espaços hortas e os espaços de  
permanência.  
Estes permitem o cultivo ornamentado o espaço.



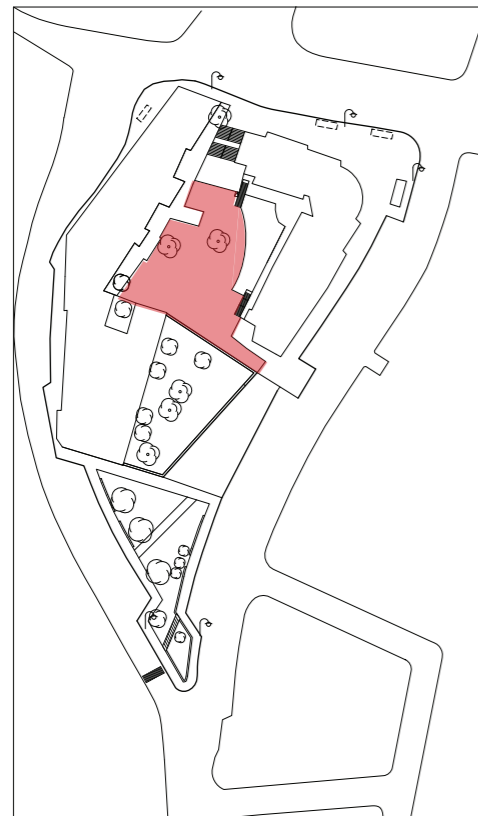
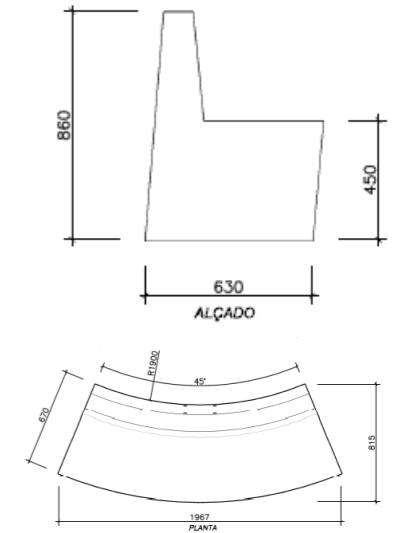
 Jardim Vertical

 Calçada Portuguesa


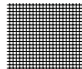
# PÁTIO INTERIOR - ESPAÇO HORTA



Ophiopogon Nigra



Sugere-se o equipamento Mia da empresa Amop para a criação dos espaços de permanência. Estes tornam o espaço versátil, conjugando as peças côncavo e convexo.

-  Jardim Vertical
-  Calçada Portuguesa