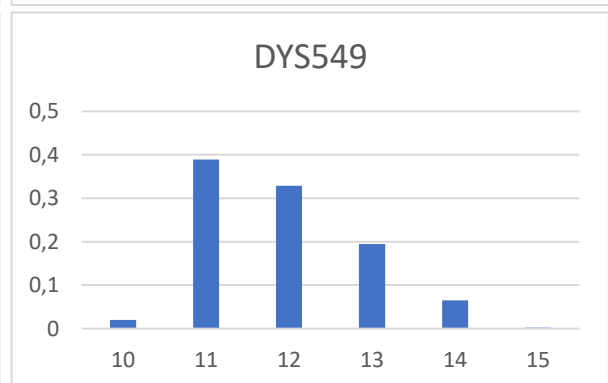
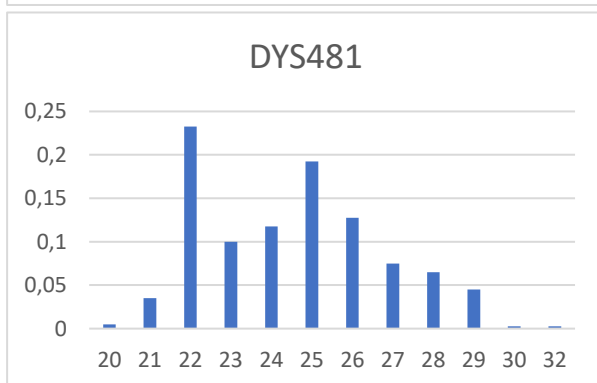
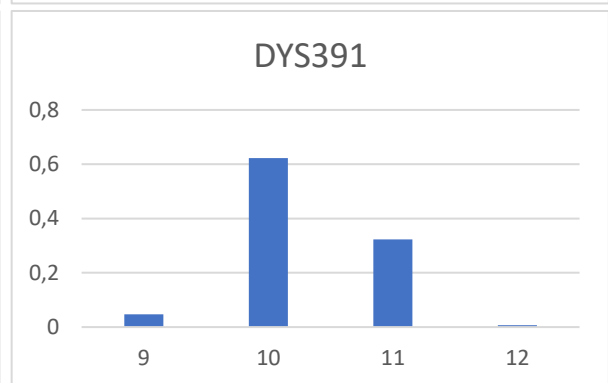
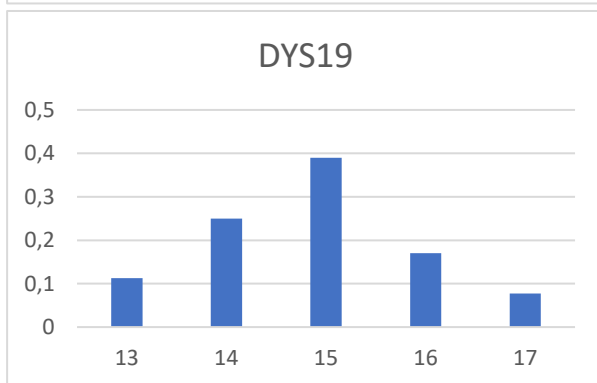
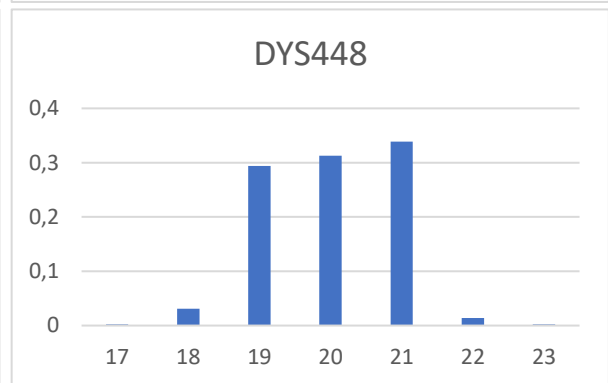
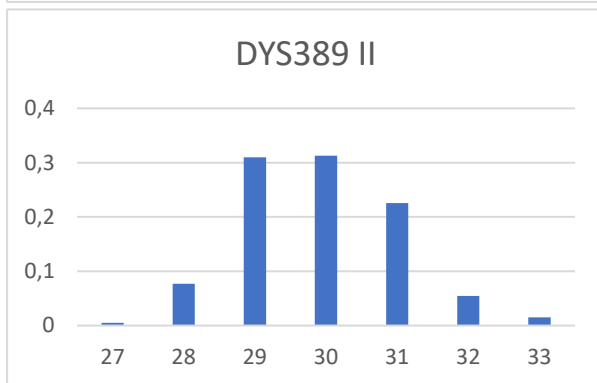
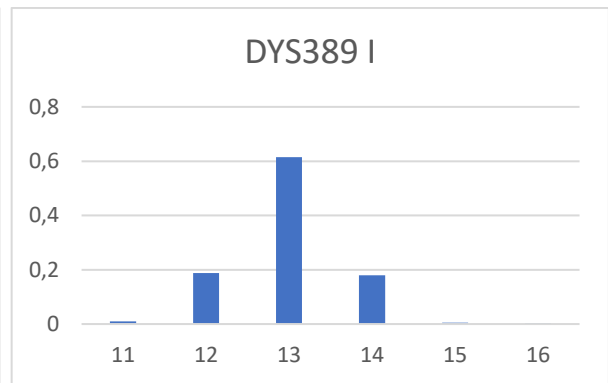
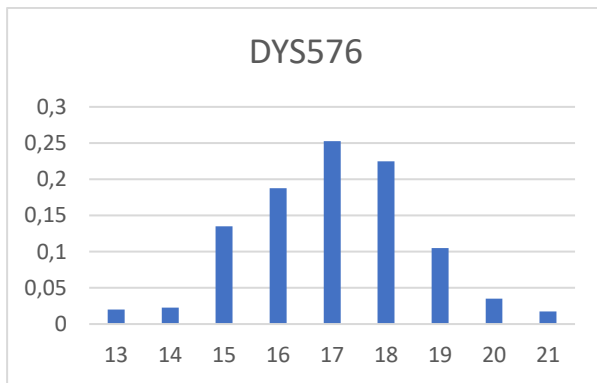
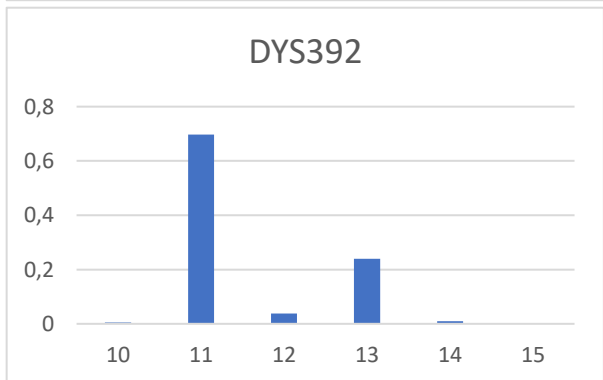
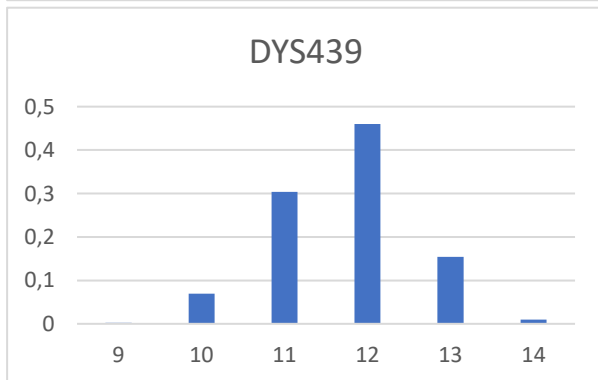
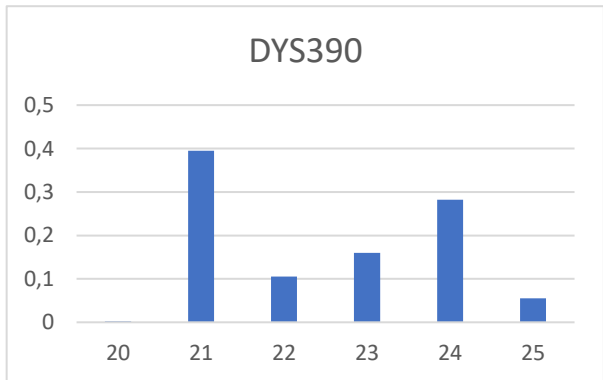
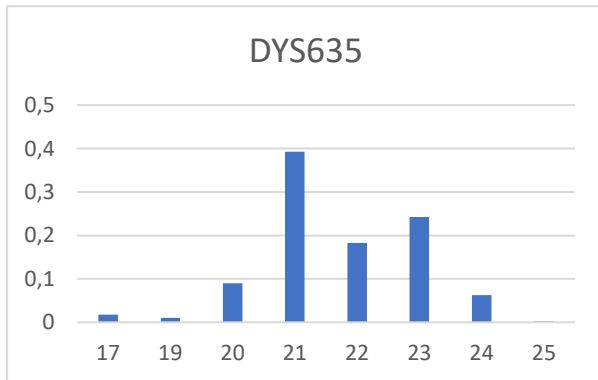
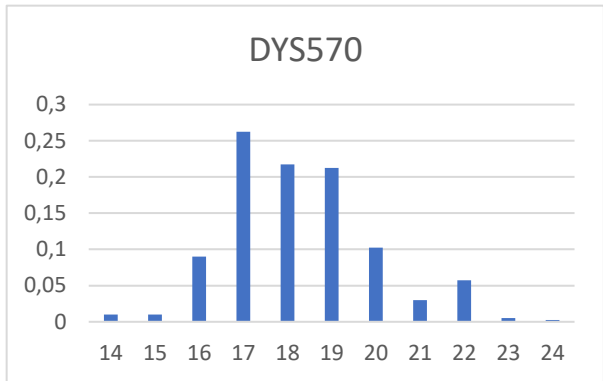
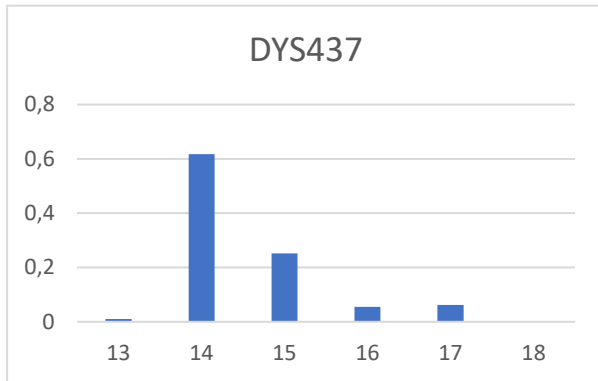
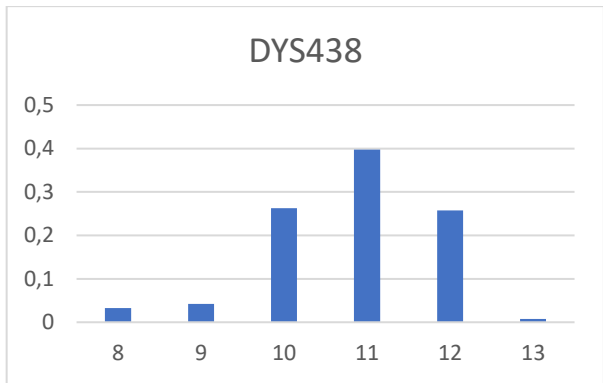
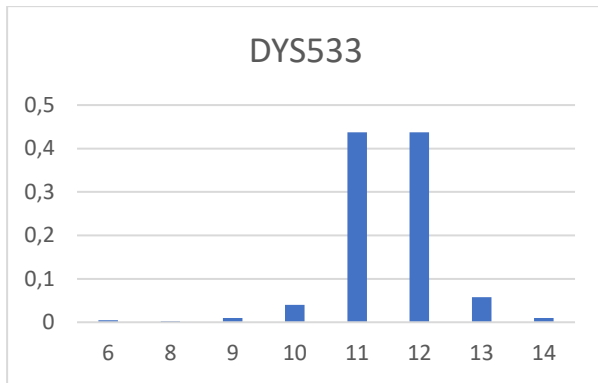
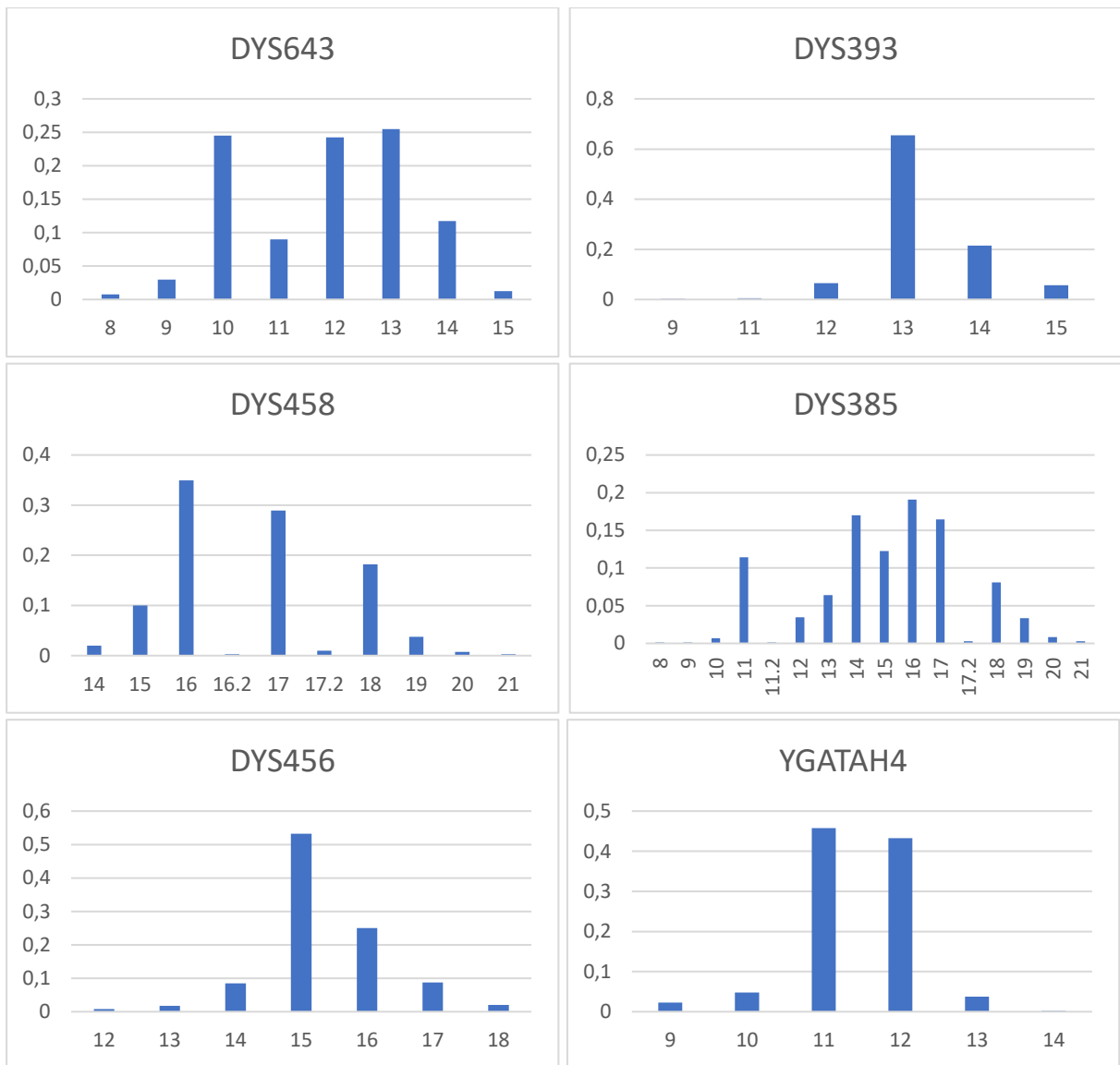


# Anexo







Anexo I-Gráficos de barras com a distribuição das frequências alélicas pelo número de repetições dos motivos repetitivos de DNA das amostras estudadas para os marcadores genéticos do cromossoma Y amplificados pelo kit PowerPlex® Y23 System (Promega) – DYS576, DYS389I/II, DYS448, DYS19, DYS391, DYS481, DYS549, DYS533, DYS438 (penta), DYS437, DYS570, DYS635, DYS390, DYS439, DYS392, DYS643 (penta), DYS393, DYS458, DYS385a/b, DYS456 e Y-GATA-H4.

Anexo 2A-Tabela de frequências alélicas pelo número de repetições dos motivos repetitivos de DNA (6-17.2) das amostras estudadas para os marcadores genéticos do cromossoma Y amplificados pelo kit PowerPlex® Y23 System (Promega) – DYS576, DYS389I/II, DYS448, DYS19, DYS391, DYS481, DYS549, DYS533, DYS438 (penta), DYS437, DYS570, DYS635, DYS390, DYS439, DYS392, DYS643 (penta), DYS393, DYS458, DYS385a/b, DYS456 e Y-GATA-H4.

	6	7	8	9	10	11	11.2	12	13	14	15	16	16.2	17	17.2
DYS576	0	0	0	0	0	0	0	0	0,02	0,0225	0,135	0,1875	0	0,2525	0
DYS389 I	0	0	0	0	0	0,01	0	0,1875	0,615	0,18	0,005	0,0025	0	0	0
DYS448	0	0	0	0	0	0	0	0	0	0	0	0	0	0,00237	0
DYS389 II	0	0	0	0	0	0	0	0	0	0	0	0	0	0	0
DYS19	0	0	0	0	0	0	0	0	0,1125	0,25	0,39	0,17	0	0,0775	0
DYS391	0	0	0	0,0475	0,6225	0,3225	0	0,0075	0	0	0	0	0	0	0
DYS481	0	0	0	0	0	0	0	0	0	0	0	0	0	0	0
DYS549	0	0	0	0	0,01995	0,38902	0	0,32917	0,19451	0,06483	0,00249	0	0	0	0
						7		7	4	8	4				
DYS533	0,005	0	0,0025	0,01	0,04	0,4375	0	0,4375	0,0575	0,01	0	0	0	0	0
DYS438	0	0	0,0325	0,0425	0,2625	0,3975	0	0,2575	0,0075	0	0	0	0	0	0
DYS437	0	0	0	0	0	0	0	0	0,01	0,6175	0,2525	0,055	0	0,0625	0
DYS570	0	0	0	0	0	0	0	0	0	0,01	0,01	0,09	0	0,2625	0
DYS635	0	0	0	0	0	0	0	0	0	0	0	0	0	0,0175	0
DYS390	0	0	0	0	0	0	0	0	0	0	0	0	0	0	0
DYS439	0	0	0	0,00248	0,06965	0,30348	0	0,46019	0,15422	0,00995	0	0	0	0	0
				8	2	3		9	9						
DYS392	0	0	0	0	0,005	0,6975	0	0,0375	0,24	0,01	0,0025	0	0	0	0
DYS643	0	0	0,0075	0,03	0,245	0,09	0	0,2425	0,255	0,1175	0,0125	0	0	0	0
DYS393	0	0	0	0,0025	0	0,005	0	0,065	0,655	0,215	0,0575	0	0	0	0
DYS458	0	0	0	0	0	0	0	0	0	0,01995	0,09975	0,34912	0,00249	0,28927	0,00997
											1	7	4	7	5
DYS385a/b	0	0	0,00139	0,00139	0,00696	0,11420	0,00139	0,03481	0,06406	0,16991	0,12256	0,19080	0	0,16434	0,00278
			3	3	4	6	3	9	7	6	3	8		5	6
DYS456	0	0	0	0	0	0	0	0,0075	0,0175	0,085	0,5325	0,25	0	0,0875	0
YGATAH4	0	0	0	0,0225	0,0475	0,4575	0	0,4325	0,0375	0,0025	0	0	0	0	0

