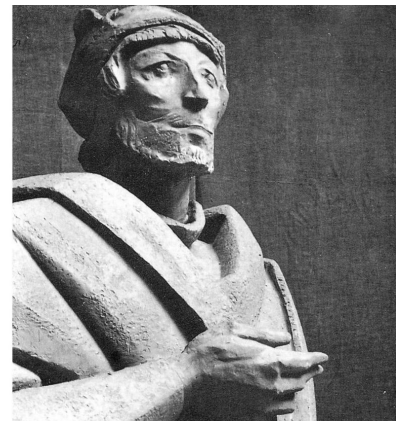
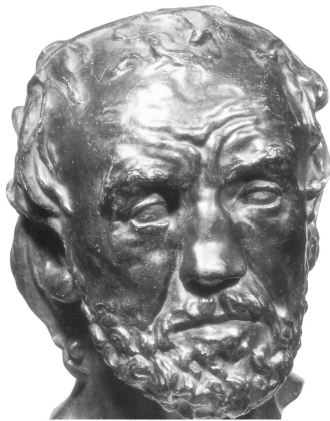
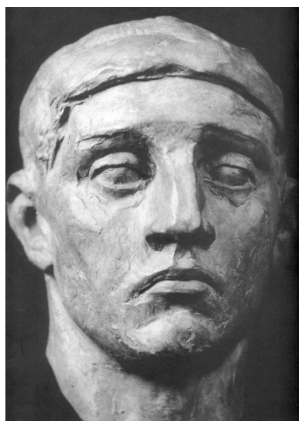


– “Constantino o Grande” (312-336) – [restos da estátua colossal] pedra, Tribunal do Palácio dos Conservadores, Roma, sd  
EMILLE-ANTOINE BOURDELLE (1881-1929) – “Figuras Gritando” ou “A Guerra” – bronze, Museu Bourdelle, Paris, 1899



AUGUST RODIN (1840-1917) – “Tête au nez cassé “ – bronze, Paris, 1865  
PABLO PICASSO (1881-1973) – “Tête de picador au nez cassé” – bronze, 18,5x13x11cm, 1903  
– “Masque” – madeira esculpida / bronze, 15,8x11x4,5cm, Paris, 1907  
JOAQUIM CORREIA (1920) – “A minha avó” – bronze, 30x20x25, Lisboa, 1938-9  
– “Gil Vicente” (1465-1536) – granito, Biblioteca Nacional, Lisboa, 1969



HENRY MOORE (1898-1986) – “Cabeça geometrizada” – pedra, 1937  
– “Cabeça do Capacete Nº 2” – bronze, 1950  
BARATA FEYO (1899-1990) – “Pintor José Tagarro” – 33x19x25cm, CACR / MAC, Lisboa, sd  
– “Pintora Menez” – bronze, 33x30x30cm, CACR, Caldas da Rainha, 1940 (1946?)  
– “Escultora Irene Vilar” – bronze, 38x18x32cm, CACR, Caldas da Rainha, 1957  
FRANCISCO FRANCO (1885-1955) – “Cabeça do sementeiro” – bronze, Paris, 1921-23  
JOÃO FRAGOSO (1913-2000) “ Retrato de jovem das Caldas da Rainha” – bronze, CACR, 1938  
– “Prof. Egas Moniz” – bronze, SPRMN Lisboa, sd.  
– “Praia do Ocidente e do crepúsculo” – bronze, c. 200cm, CACR, Caldas da Rainha, 1960



PABLO PICASSO (1881-1973) – “Tête de femme “ (Fernande) – bronze, 35x24x25cm, 1906

– Tête de femme (Fernande) – bronze, 40,5x23x26cm, 1909-10

– “Tête de femme” – gesso / bronze, 71,5x41x33cm, Museu Picasso, Paris, 1931

HENRI MATISSE (1868-1954) – “Cabeça de Jeannette I-II-III-IV-V” – bronze, MOMA, NY, 1910-13

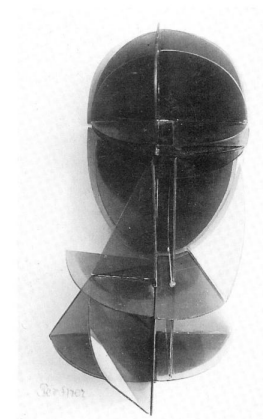
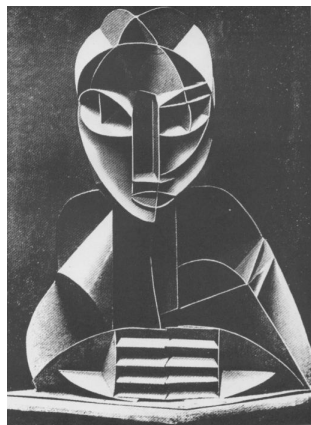
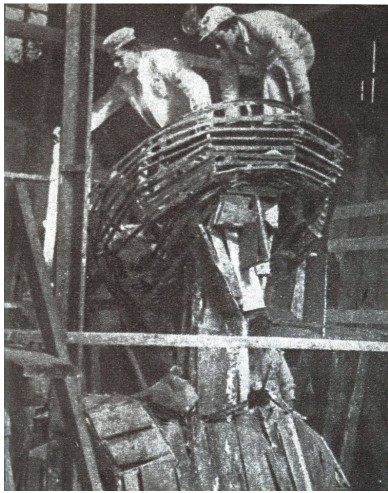
ALBERTO GIACOMETTI (1901-1966) – “O casal” – bronze, 64cm, Zurich, 1926

– “Busto de mulher” (Diane Bataille) – bronze, 48,5x13,5x12,5cm, 1945

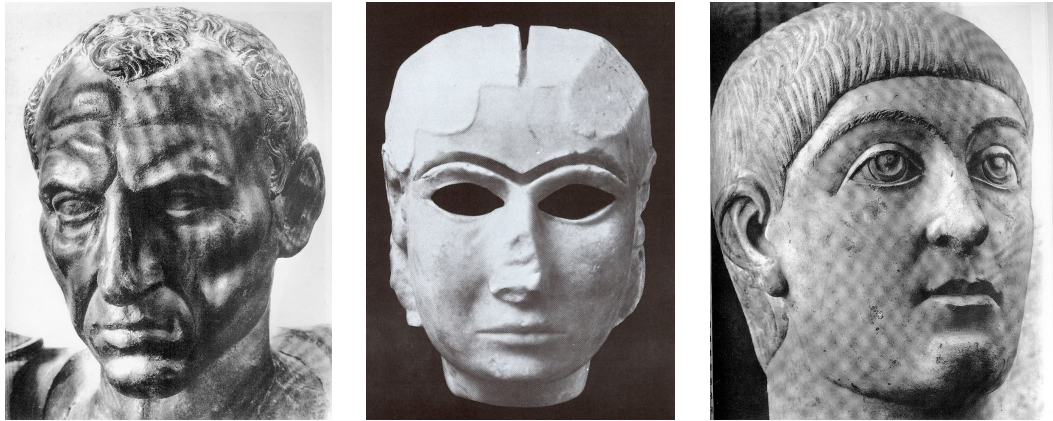
– “Diego” – bronze, Museu Nacional de Arte Moderna, Paris, 1953



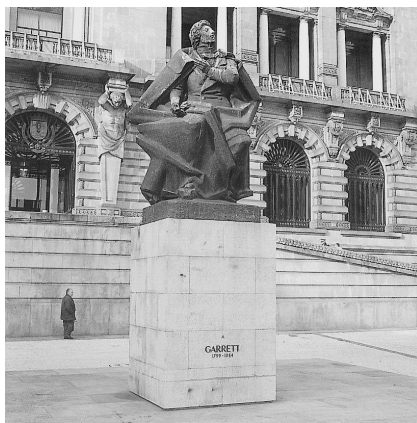
JÚLIO GONZÁLEZ (1876-1942) – “Masque inquiet” – terracota / bronze, 22cm, 1914  
 – “Masque ombre et lumière” – bronze 14cm, 1934-35  
 “Masque de Montserrat criant” – ferro / bronze, 27x16x12cm, MNAM, Paris, 1936 / 1941-2  
 RAOUL HAUSMANN (1886-1971) – “Tête mécanique” – “L’esprit de notre temps” – Paris, 1919  
 DAVID SMITH (1906-1965) – Agricola Head – ferro e aço, 47cm, 1933  
 – “Head” – fundição em ferro, c. 50cm, New York, Museum of Modern Art, 1938  
 – “Cabeça como uma natureza morta II” – alumínio fundido, 35,5x21,5x10,16cm, 1942  
 ALBERTO GIACOMETTI (1901-1966) – “La table surréaliste” – bronze, 142,8cm, Paris, 1933



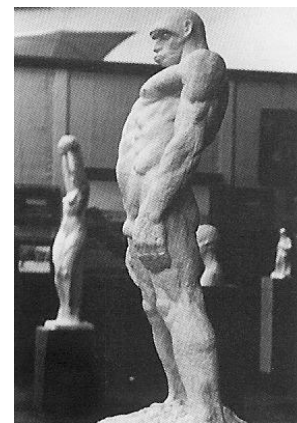
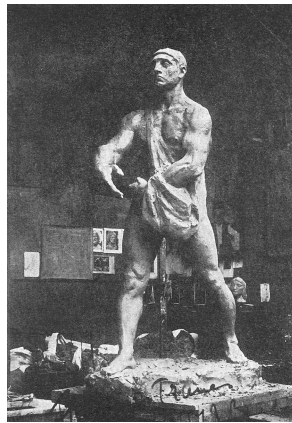
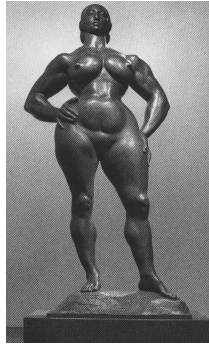
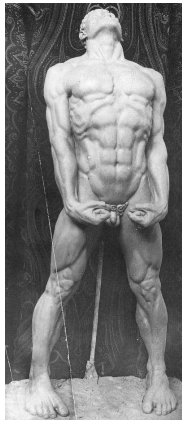
LEOPOLDO DE ALMEIDA (1898-1975) – Estrutura da cabeça do Infante D. Henrique para o Padrão dos Descobrimentos – Belém, Lisboa, 1939  
NAUM GABO (1890-1977) – “Constructed Head nº 2” – aço laminado, 45cm, 1916  
ANTOINE PEVSNER (1884-1962) – “Woman’s Head ” – madeira e plástico, 37,5x24x24cm, 1925



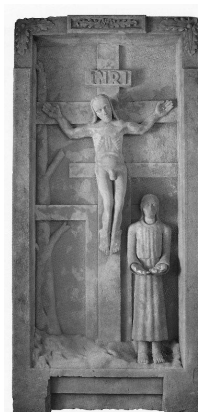
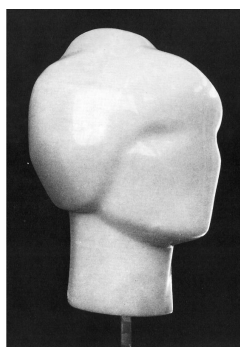
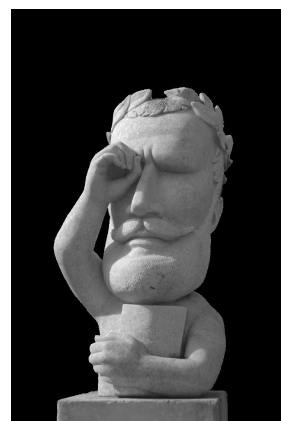
- “César” – bronze, Museo Nazionale, Roma, c. 50 a.C.
- “Cabeça feminina” – alabastro, Uruk, c. do 3º Milénio
- “Filho de Constantino o Grande” – mármore, Palazzo Capitolino, Roma, c. 350 d.C.



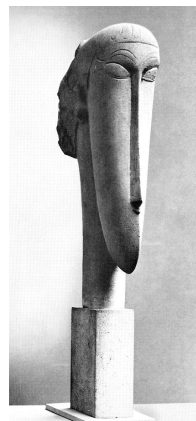
TEIXEIRA LOPES, António (1866-1942) – “Eça de Queirós” (1845-1900) – mármore, Lisboa, 1903  
 MARTINS CORREIA (1910-1999) – “Fernão Lopes” (1380-1460) – granito rosa, BN, Lisboa, 1969  
 JOAQUIM CORREIA (1920) – “Gil Vicente” (1465-1536) – granito rosa, BN, Lisboa, 1969  
 EUCLIDES VAZ (1916 -1991) – “Luís de Camões” (1524? -1580) – granito rosa, BN, Lisboa, 1969  
 ÁLVARO de BRÉE (1903-1962) – “Eça de Queirós” (1845-1900) – granito rosa, BN, Lisboa, 1969  
 BARATA FEYO (1899-1990) – “Almeida Garrett” – bronze, Câmara Municipal, Porto, 1954  
 LEOPOLDO DE ALMEIDA (1898-1975) – “Calouste Gulbenkian” (1868-1955) – pedra e bronze  
 FCG, Lisboa, 1965



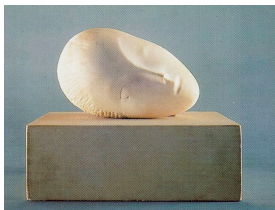
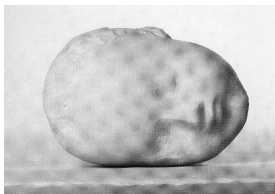
CANTO DA MAYA, (1890-1981) – "A coragem da vida" – barro, atelier do escultor, Paris, 1916  
GASTON LACHAISE (1882-1935) "Femme debout " – bronze, 1932  
AUGUST RODIN (1840-1917) –" Saint Jean-Baptiste Prêchant"– gesso, 1878  
FRANCISCO FRANCO (1885-1955) – "O sementeiro" – barro, atelier do escultor, Paris, 1921-23  
BARATA FEYO (1899-1990) – "O Primeiro Cânone" – gesso, SNBA, Lisboa, 1929



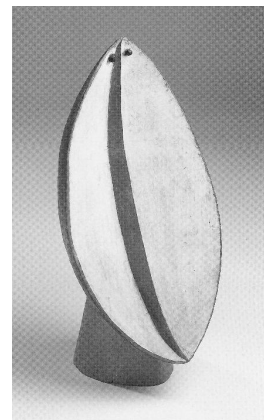
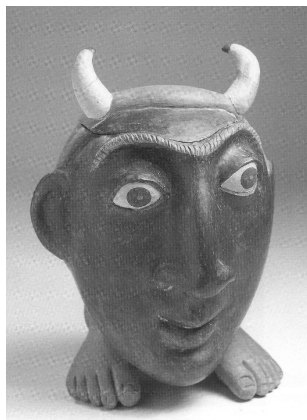
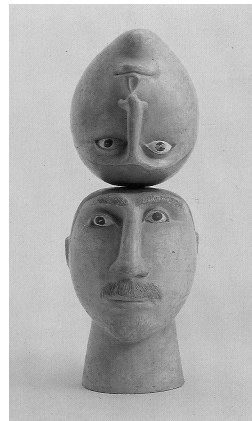
- ANTÓNIO DUARTE (1912-1998) – “D. Dinis” – mármore Viana claro, 100x52x55cm, AMAD, 1991  
– “D. Afonso Henriques “ – mármore de Lioz, 100x60x35cm, AMAD, 1991  
– “Camões” – mármore de Trigaches, 105x60x55cm, 1991  
– “Retrato de Dorita Castel-Branco” – gesso, Caldas da Rainha, AMAD, 1961  
DORITA CASTEL-BRANCO (1936-1996) – “Auto-retrato” – Mármore, 54X20X20, FCG, 1973  
HEIN SEMKE (1899-1995) – “Família e trabalho” – Gesso pintado, 127x5x19cm, 1935  
– “Tema actual” – calcário, 256x118,5x40cm, 1936  
– “Pietà – bronze, 104x40x20,5cm, 1937



- ANTÓNIO DUARTE (1912-1998) – “Homo – falus” – cimento, 104x50x50cm, AMAD, 1989  
RAYMOND DUCHAMP-VILON (1887-1968) – “Tête du professeur Gosset” – gesso patinado, 30x23,5x23,5cm, MNAM, Paris, 1918  
PABLO PICASSO (1881-1973) – “Tête de femme” – gesso e madeira, 128,5x54,5x62,5cm, 1931  
– “Buste de femme” (Marie-Thérèse) – bronze, 128,5x54,5x62,5cm, 1931  
– “Tête de femme” (Marie-Thérèse) – bronze, 50x31x27cm, 1931  
AMEDEO MODIGLIANI (1884-1920) – “Tête” – calcário, 63,5x12,5x35cm, Tate Gallery, 1911-12  
– “Tête” – pedra, 71,1x16, 5x23, 5, Philadelphia Museum of Art, 1911-1912  
– “Tête” – calcário, 63,5x15,1x21cm, Salomon Guggenheim Museum, NY, 1911-1913



- MARTINS CORREIA, (1910-1999) – “Sem Título” – bronze policromado, MMC, Golegã, 1960  
 – “Maria Elsa Martins Correia” – bronze policromado, 97x31x22cm, MMC, Golegã, sd  
 – “Sofia de Mello Breyner” – bronze policromado, s/ madeira, 35x38x24cm MMC, Golegã, 1986  
 CONSTANTIN BRANCUSI (1876-1957) – “Criança dormindo” – mármore, 11x16,5x14,5cm, 1908  
 – “A musa adormecida” – mármore, 18,4x26,7x20,3cm, 1909-10  
 – “Le commencement du Monde” – bronze, 28,5cm, Kröller-Muller Museum, Holanda, 1924  
 MARTINS CORREIA (1910-1999) – “Homenagem a Natália Correia” – bronze, MMC, Golegã, sd  
 PABLO PICASSO (1881-1973) – “Tête de femme” (Jacqueline) – cartão, 50x42x28cm 1962  
 – “Tête de femme” (Jacqueline au ruban vert) – cartão recortado e policromado, 50,5x41cm, 1962  
 – “Tête de femme” – chapa recortada e policromada, 24,5x24,2x12cm, 1962



- PABLO PICASSO (1881-1973 – “Tête de Taureau “ – assemblage de sela e guidador de bicicleta, 42x41x15, Museu Picasso, Paris, 1942  
JOAQUIM CORREIA (1920) no seu Atelier em Paço de Arcos defronte à maquete de – “ Ninfa e Fauno ” – barro / gesso, 29 Julho de 2007. (Fotografia de José Teixeira)  
JORGE VIEIRA (1921-1999) – “ Retrato de Rolando Sá Nogueira ” – terracota, c. 1950  
– “Sem título” – terracota com engobes, 45x18x26,5cm, 1953  
– “Sem título” – terracota com engobes, 32x19x21cm, 1951  
– “Sem título” – bronze policromado, 37,5x20,5x29cm, 1955  
– “Sem título” – terracota com engobes, 35x17,5x15,5cm, 1953